

# Landslides in Draper, Utah

October 12, 2001

# Potato Hill landslide

- N1/2 sec. 9, T. 4 S., R. 1 E.
- North-northeast aspect
- Elevation: 5140 ft (toe), 5740 ft (crown)
- Relief: approx 600 feet
- Multi-lobed (?)
- Back-tilted head block
- Significant minor scarp



View to south-southwest of landslide





View to northeast of lower  
landslide

Ql (lbg)

Qms (cls)





Irregular open ground cracks  
forming northeast-trending  
zone in crown of landslide  
above left (west) flank





View downslope of back-tilted  
head block





Irregular open ground cracks  
forming northeast-trending  
zone in crown of landslide  
above right (east) flank





View upslope of landslide – shadows accentuate scarps





Narrow flat-lying (back-tilted?) surface  
adjacent to right flank of landslide







View to east of head block – back-tilted surface



# Other landslides and features



Possible small landslide directly west of  
Potato Hill landslide





View to south of Red Rock landslide



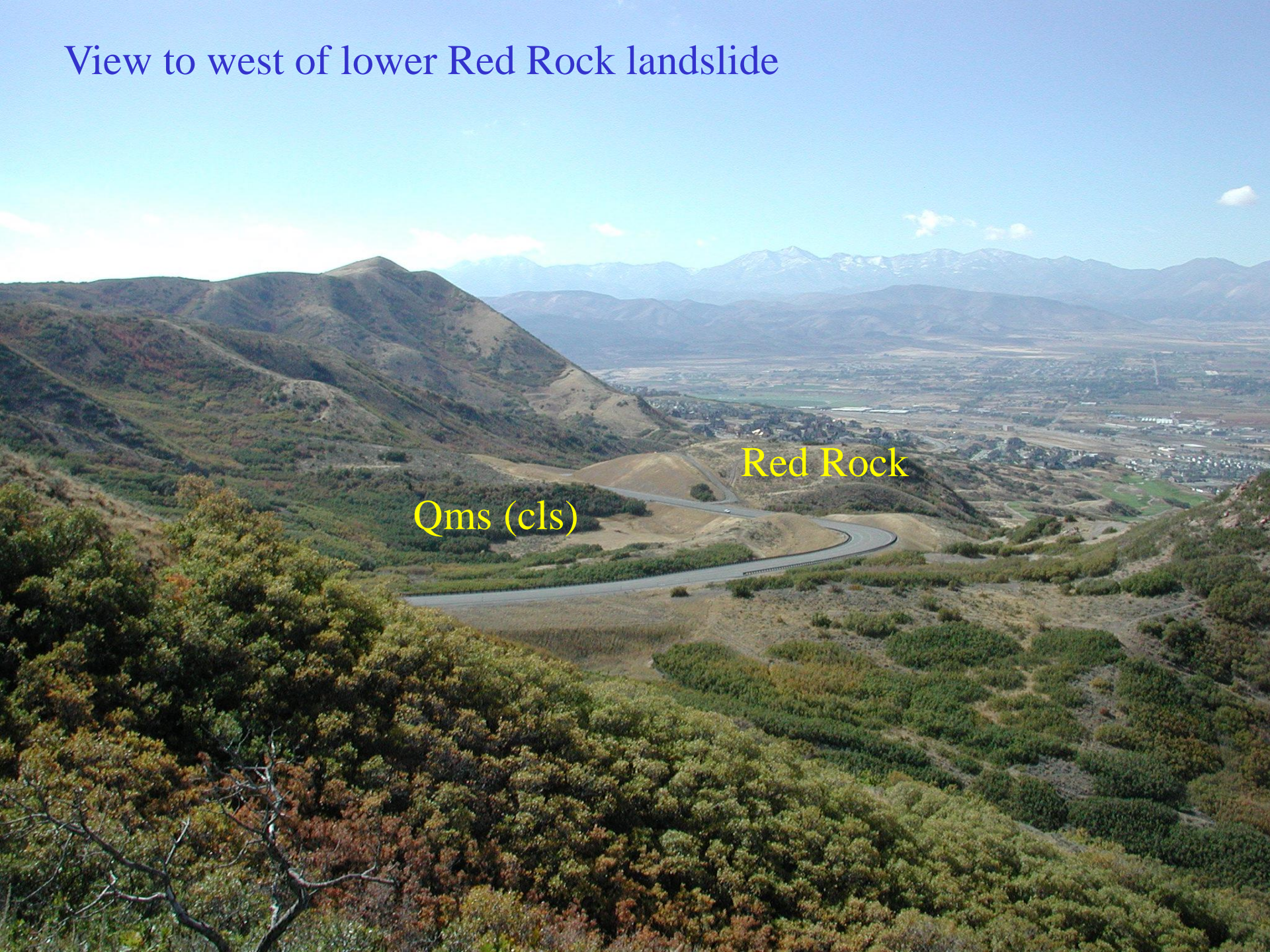


View to west-southwest of western tongue  
of Red Rock landslide





# View to west of lower Red Rock landslide



Qms (cls)

Red Rock



# Red Rock landslide

$T_p$

$Q_{ms} (cls)$



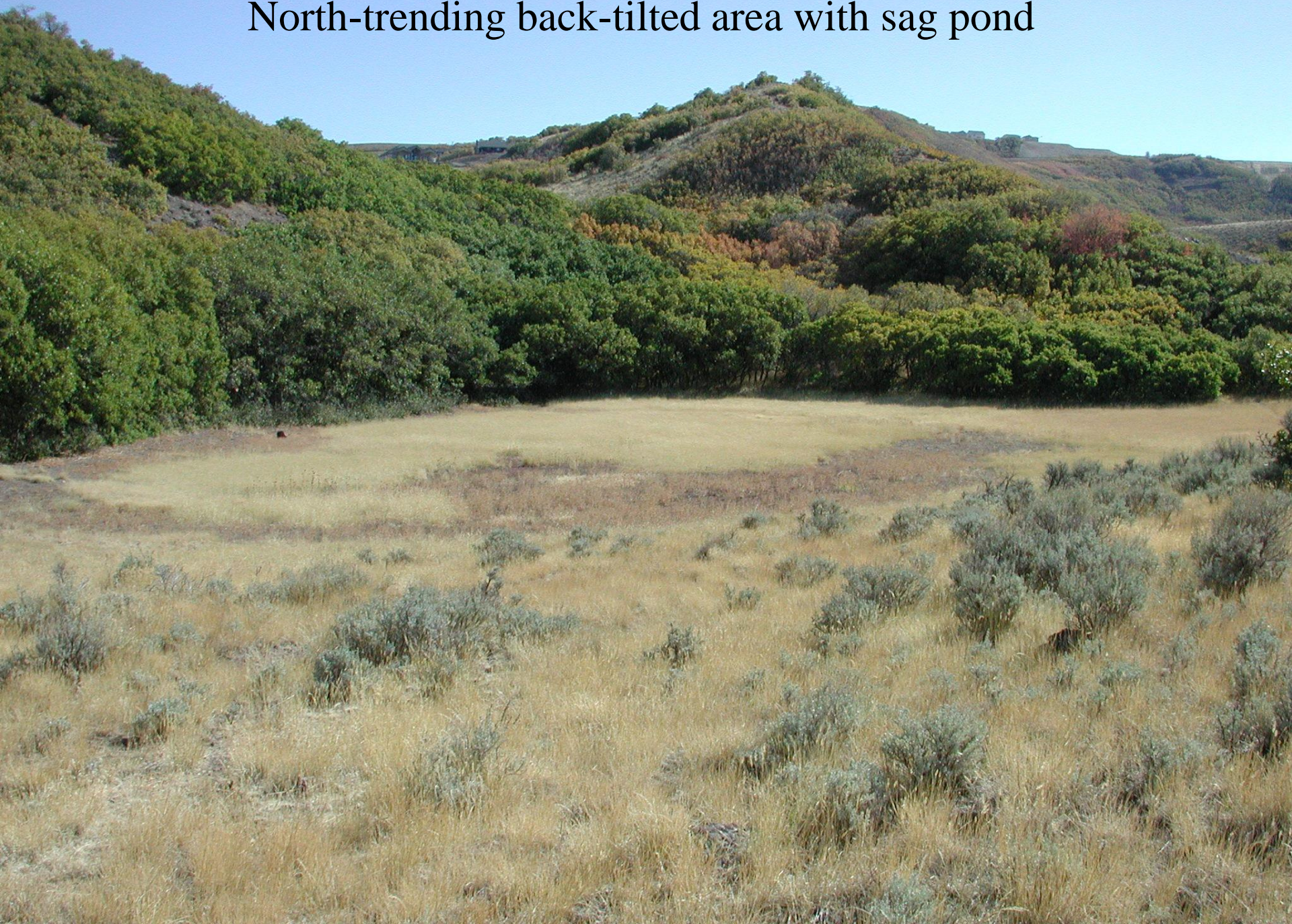


View upslope of Red Rock landslide





North-trending back-tilted area with sag pond





View of west-facing scarp associated with back-tilted area





View to south-southwest of back-tilted area. Note ground to right is higher than ground at base of scarp.

