

**UPDATE ON CURRENT LANDSLIDE CONDITIONS, NORTHERN UTAH**  
**UTAH GEOLOGICAL SURVEY**  
**April 26, 2006**

**LANDSLIDE MOVEMENT**

1. About 30 active landslides this year, including several large damaging slides.
2. Counties with active landslides include Morgan, Davis, Salt Lake, Summit, Utah, and Weber Counties.
3. Several landslides are impacting residential subdivisions:
  - a. Sherwood Hills landslide, Provo (about 35 houses, numerous vacant lots)
  - b. Springhill landslide, North Salt Lake (about 15 to 20 houses)
  - c. Creekside Drive, Mountain Green (3 houses, 2 other lots)
  - d. Sunset Drive landslide, Layton (about 5 houses)
  - e. Sunset Hollow landslide, Bountiful (3 lots)
4. At least two State highways are being displaced or threatened including:
  - a. State Route 226, Weber County – minor offset of road by movement
  - b. I-80, Parleys Canyon – Mountain Dell landslide moving above cut slope

**Landslide movement is likely to continue for next 45 days (longer if May is wetter than normal).**

**CLIMATIC (Precipitation)**

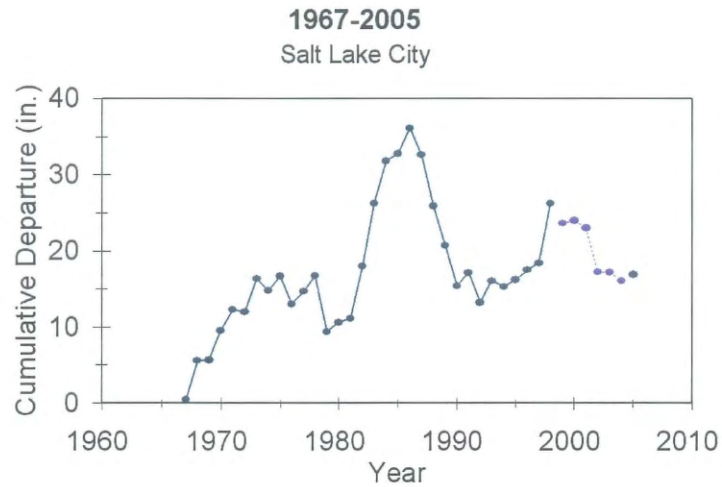
Generally wetter than normal conditions exist in the urban areas and back valleys of northern Utah. At high elevation snowpack is at or near record levels between Salt Lake County and the Idaho border.

**GROUND-WATER LEVELS**

Monitoring of ground-water levels in landslides in Davis and Utah Counties indicated the highest April levels recorded (Davis and Utah Counties) since UGS monitoring began in 1999. Locally, ground-water levels may be at or near historical highs.

## CLIMATIC CONDITIONS

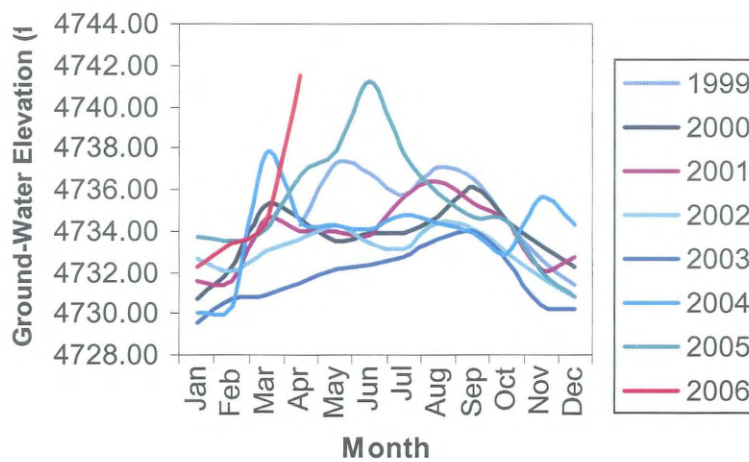
Last four decades have been wetter than normal, resulting in cumulative excess precipitation in northern Utah.



Depending on location, the last two to three years have been wetter than normal. 2006 is second to third successive wet year.

## GROUND-WATER LEVELS IN LANDSLIDES

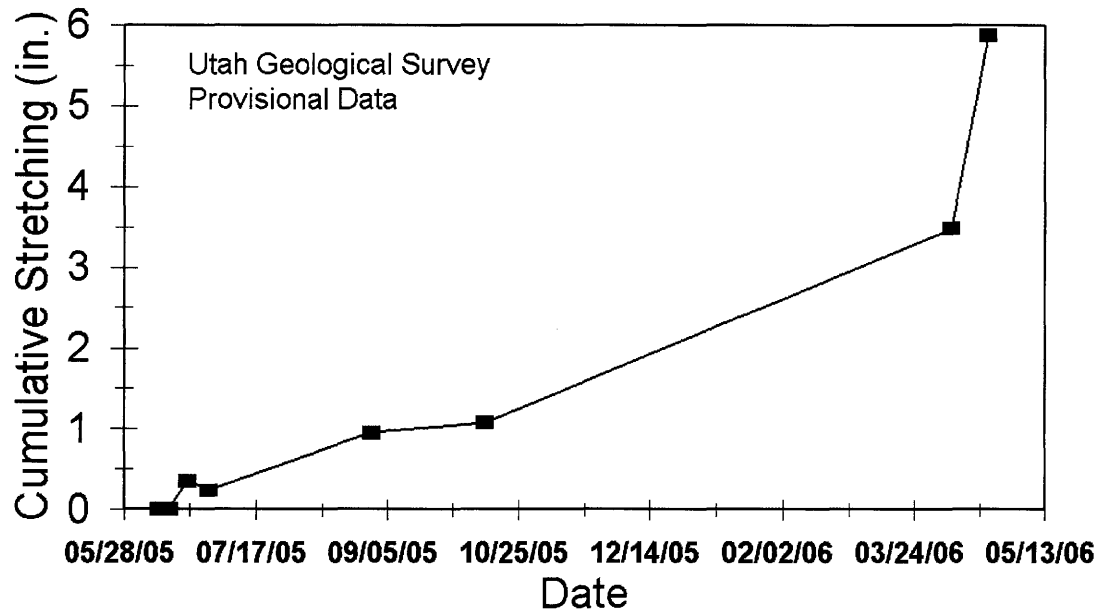
**Well B-107**  
**Sunset Drive landslide, Layton**



## LANDSLIDE MOVEMENT

### Main Scarp Stretching

Creekside Drive landslide, Morgan Co.



## PHOTOGRAPHS OF LANDSLIDE DAMAGE IN 2006



Damaging landslides in 2006. (A) Sunset Hollow landslide, Bountiful. (B) Sherwood Hills landslide, Provo. Damage to Mile High Drive. (C) Damage to State Route 226 caused by movement of Green Pond landslide. (D) Creekside Drive landslide, Mountain Green. House abandoned on April 14, 2006. (E) 1650 East landslide, South Weber. Landslide destroyed house and injured small girl.