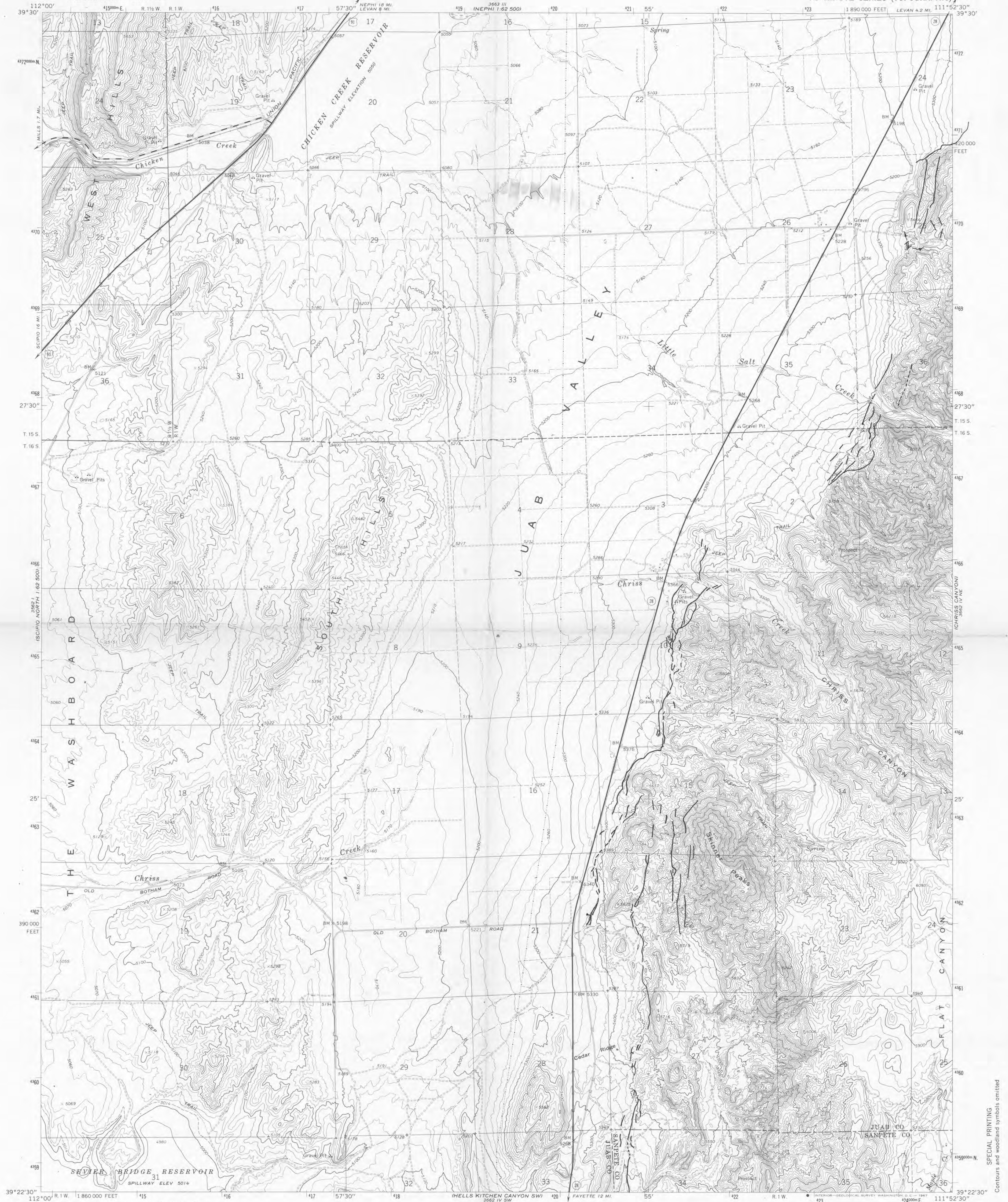
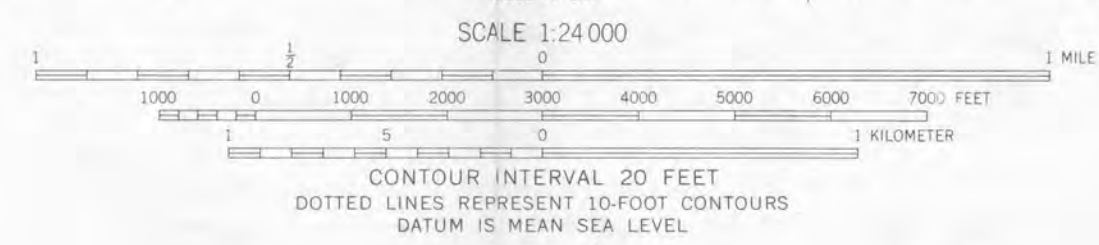
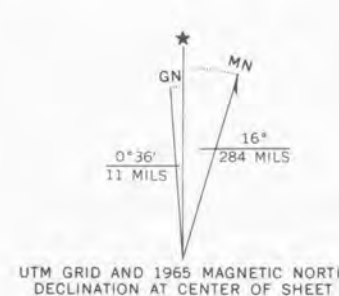


UNITED STATES
DEPARTMENT OF THE INTERIOR
GEOLOGICAL SURVEY

SKINNER PEAKS QUADRANGLE
UTAH
7.5 MINUTE SERIES (TOPOGRAPHIC)



Mapped, edited, and published by the Geological Survey
Control by USGS and USC&GS
Topography by photogrammetric methods from aerial
photographs taken 1963. Field checked 1965
Polyconic projection. 1927 North American datum
10,000-foot grid based on Utah coordinate system, central zone
1000-meter Universal Transverse Mercator grid ticks,
zone 12, shown in blue
Fine red dashed lines indicate selected fence lines
Areas covered by dashed light-blue pattern
are subject to controlled inundation



ROAD CLASSIFICATION	
Heavy-duty	Light-duty
Medium-duty	Unimproved dirt
U. S. Route	State Route

SKINNER PEAKS, UTAH
N3922.5—W11152.5/7.5

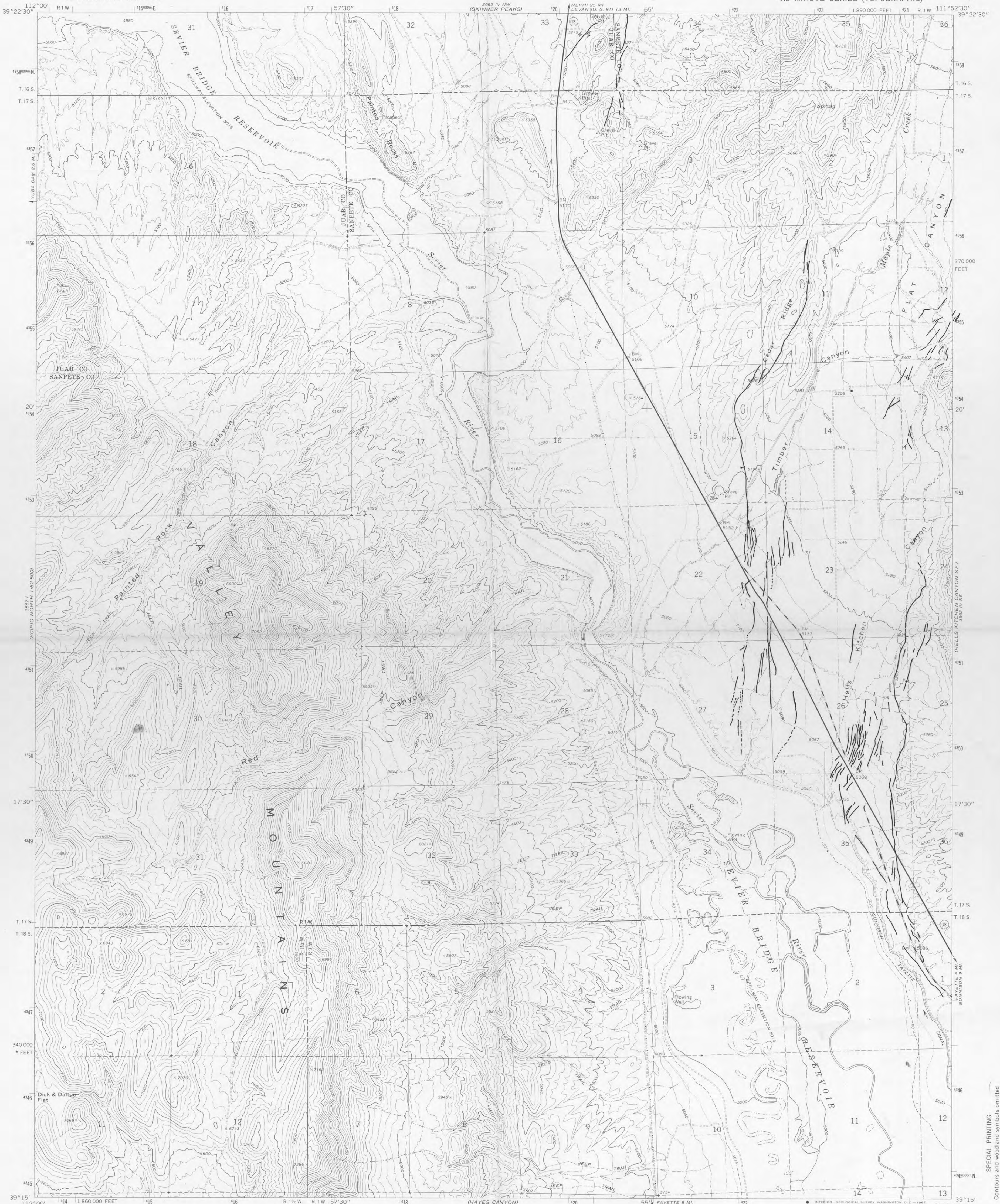
1965

AMS 3662 IV NW—SERIES V897

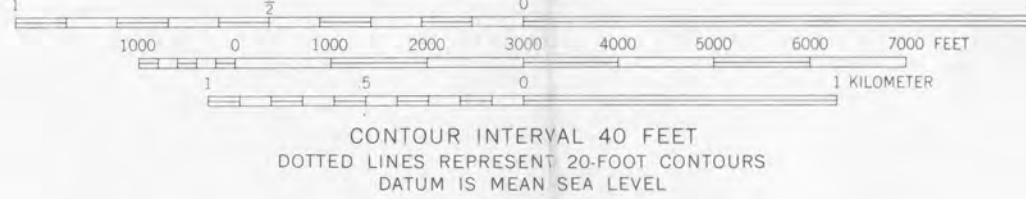
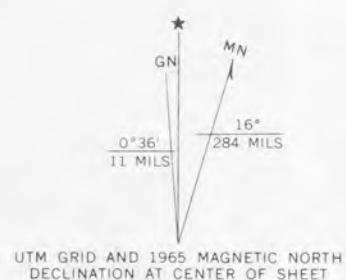
SPECIAL PRINTING
Contours and woodland symbols omitted

UNITED STATES
DEPARTMENT OF THE INTERIOR
GEOLOGICAL SURVEY

HELLS KITCHEN CANYON SW QUADRANGLE
UTAH
7.5 MINUTE SERIES (TOPOGRAPHIC)



Mapped, edited, and published by the Geological Survey
Control by USGS and USC&GS
Topography by photogrammetric methods from aerial
photographs taken 1963. Field checked 1965
Polyconic projection. 1927 North American datum
10,000-foot grid based on Utah coordinate system, central zone
1000-meter Universal Transverse Mercator grid ticks,
zone 12, shown in blue
Fine red dashed lines indicate selected fence lines
Areas covered by dashed light-blue pattern
are subject to controlled inundation



ROAD CLASSIFICATION	
Heavy-duty	Light-duty
Medium-duty	Unimproved dirt
	State Route

HELLS KITCHEN CANYON SW, UTAH
N3915-W11152.5/7.5

1965

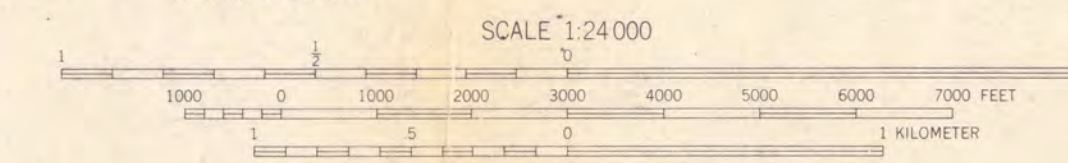
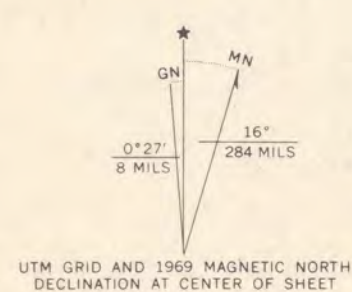
AMS 3662 IV SW-SERIES B897

THIS MAP COMPLIES WITH NATIONAL MAP ACCURACY STANDARDS
FOR SALE BY U. S. GEOLOGICAL SURVEY, DENVER, COLORADO 80225, OR WASHINGTON, D. C. 20242
A FOLDER DESCRIBING TOPOGRAPHIC MAPS AND SYMBOLS IS AVAILABLE ON REQUEST

SPECIAL PRINTING
Contours and woodland symbols omitted



Mapped, edited, and published by the Geological Survey
Control by USGS, and USC&GS
Topography from aerial photographs by multiplex methods,
and by plane-table surveys 1948
Aerial photographs taken 1946
Polyconic projection. 1927 North American datum
10,000-foot grid based on Utah coordinate system,
central zone
Unchecked elevations are shown in brown
Red tint indicates area in which only
landmark buildings are shown
1000-meter Universal Transverse Mercator grid ticks,
zone 12, shown in blue

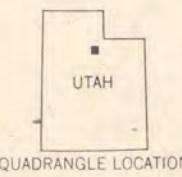


CONTOUR INTERVAL 40 FEET
DOTTED LINES REPRESENT 10 FOOT CONTOURS
DATUM IS MEAN SEA LEVEL

THIS MAP COMPLIES WITH NATIONAL MAP ACCURACY STANDARDS
FOR SALE BY U.S. GEOLOGICAL SURVEY, DENVER, COLORADO 80225 OR WASHINGTON, D.C. 20242
A FOLDER DESCRIBING TOPOGRAPHIC MAPS AND SYMBOLS IS AVAILABLE ON REQUEST

Revisions shown in purple and recompilation of
woodland areas compiled from aerial photographs
taken 1969. This information not field checked
Purple tint indicates extension of urban areas

ROAD CLASSIFICATION
Heavy-duty ——— Light-duty ———
Medium-duty ——— Unimproved dirt ———
Interstate Route U.S. Route State Route



OREM, UTAH
SW/4 OREM 15' QUADRANGLE
N4015-W1137.5/7.5

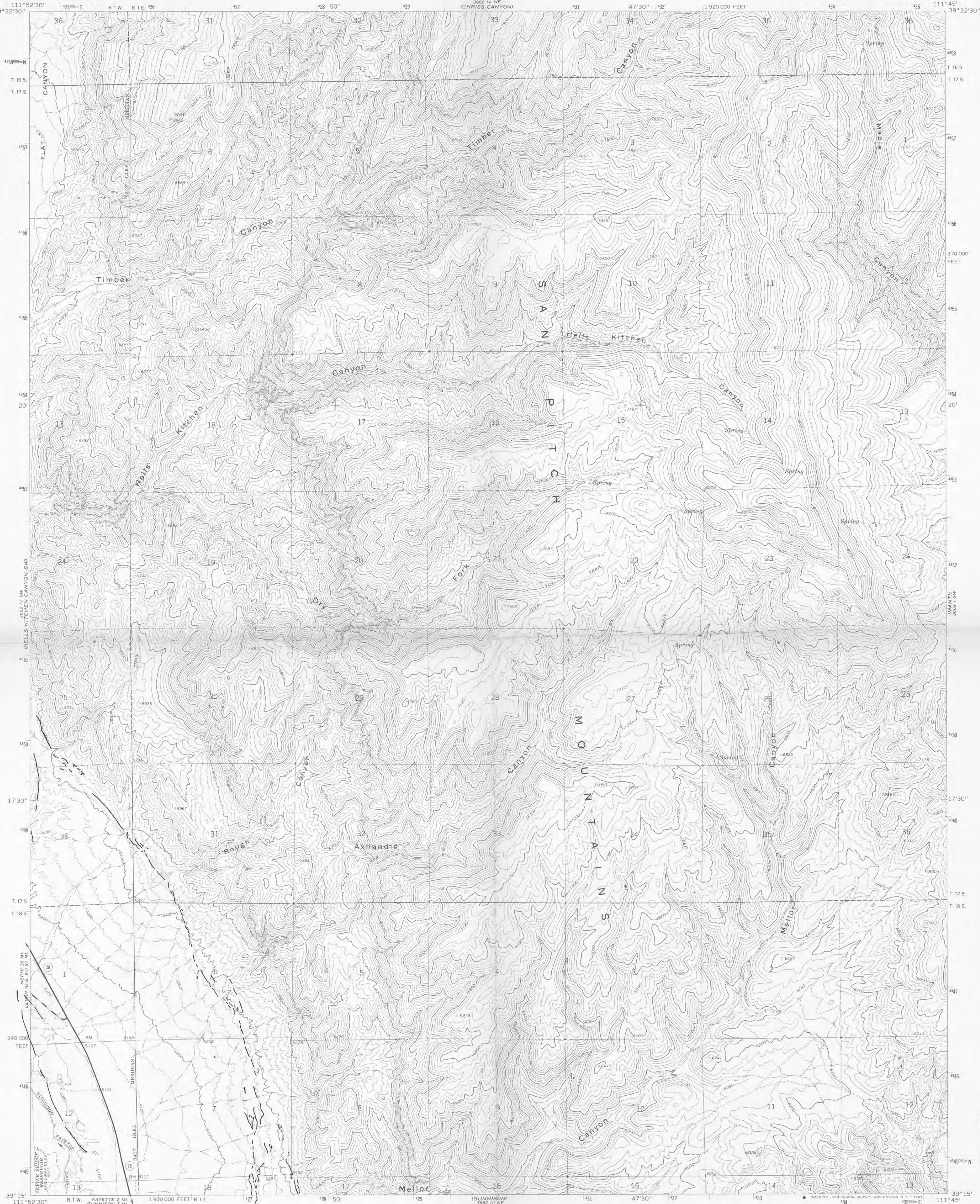
1948
PHOTOREVISED 1969
AMS 3664-1 SW-SERIES V897

SPECIAL PRINTING
Contours and woodland symbols omitted

Provo Intersect Box P
3664-1 SW
PASEN GROVE

UNITED STATES
DEPARTMENT OF THE INTERIOR
GEOLOGICAL SURVEY

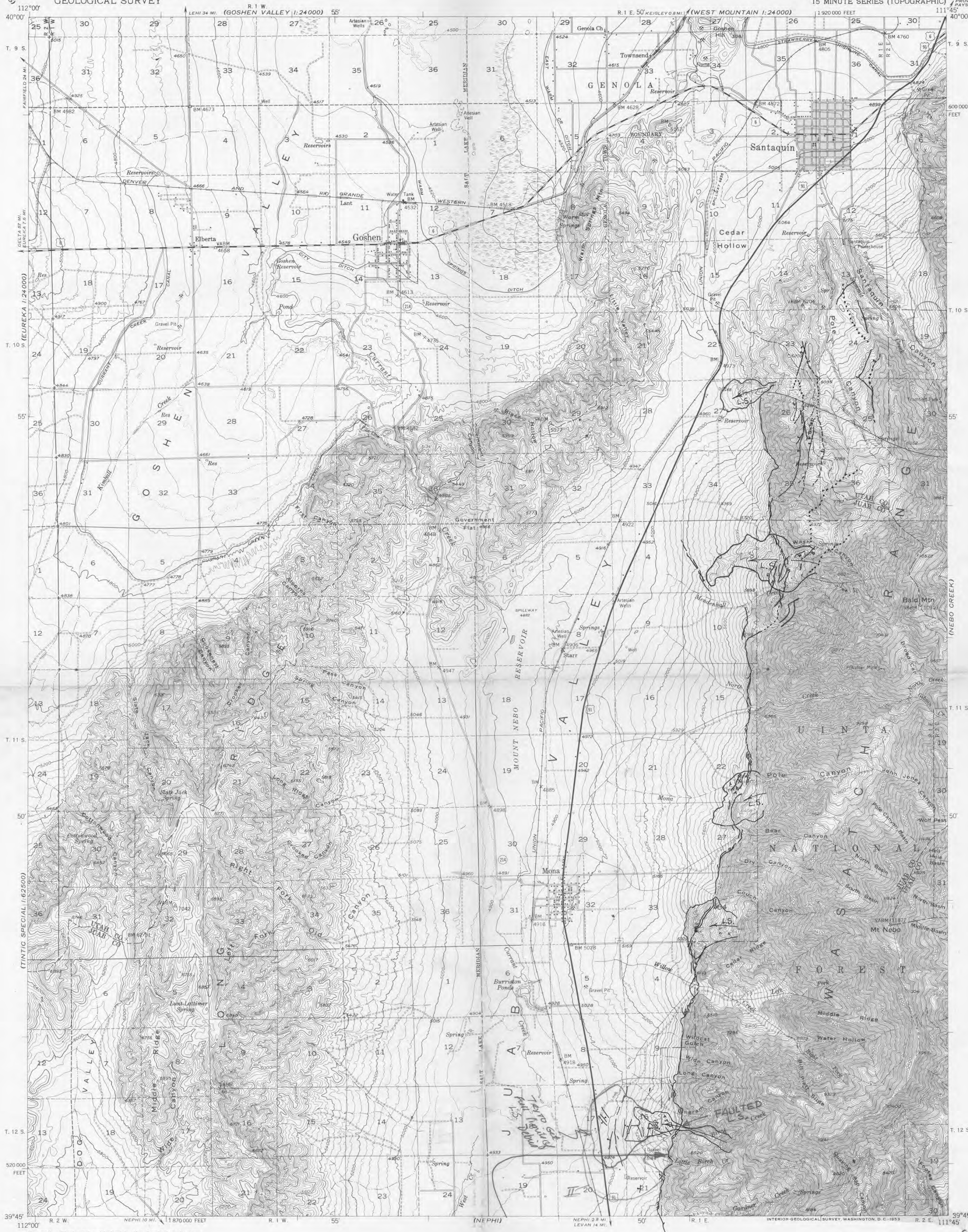
HELLS KITCHEN CANYON SE QUADRANGLE
UTAH—SANPETE CO.
7.5 MINUTE SERIES (TOPOGRAPHIC)



UNITED STATES
DEPARTMENT OF THE INTERIOR
GEOLOGICAL SURVEY

SANTAQUIN QUADRANGLE
UTAH

15 MINUTE SERIES (TOPOGRAPHIC)



Mapped, edited, and published by the Geological Survey
Control by USGS and USC&GS
Topography from aerial photographs by multiplex methods
and by plane-table surveys 1951. Aerial photographs taken 1947
Polyconic projection. 1927 North American datum
10,000-foot grid based on Utah coordinate system, central zone
Red tint indicates areas in which only landmark buildings are shown
Dashed land lines indicate approximate locations
Unchecked elevations are shown in brown



CONTOUR INTERVAL 40 FEET
DOTTED LINES REPRESENT HALF-INTERVAL CONTOURS
DATUM IS MEAN SEA LEVEL

SCALE 1:62500

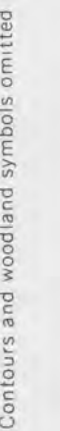


ROAD CLASSIFICATION
Heavy-duty ——— 4 LANE 16 LANE Light-duty ———
Medium-duty ——— 4 LANE 16 LANE Unimproved dirt ———
U.S. Route ——— State Route ———

SANTAQUIN, UTAH
N3945-W11145/15

1951

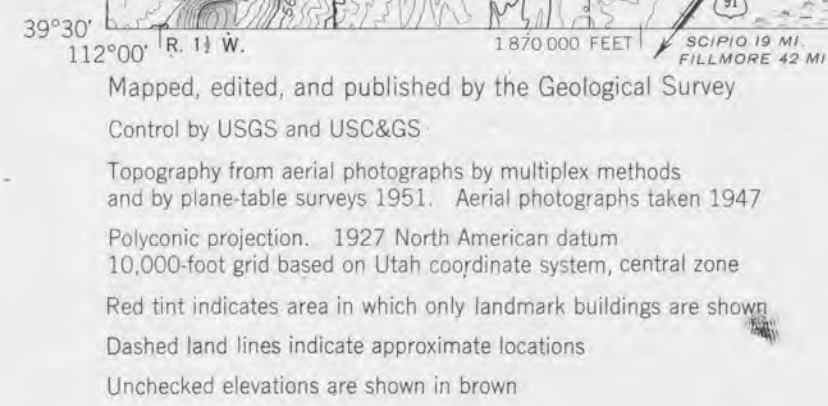
THIS MAP COMPLIES WITH NATIONAL MAP ACCURACY STANDARDS
FOR SALE BY U.S. GEOLOGICAL SURVEY, FEDERAL CENTER, DENVER, COLORADO OR WASHINGTON 25, D. C.
A FOLDER DESCRIBING TOPOGRAPHIC MAPS AND SYMBOLS IS AVAILABLE ON REQUEST



AMS 3662 IV NE—SERIES V897

(TINTIC SPECIAL) 17

(NEBO CREEK)





CONTOUR INTERVAL 40 FEET
DATUM IS MEAN SEA LEVEL

ROAD CLASSIFICATION

Heavy-duty 4 LANE 16 LANE Light-duty 4 LANE 16 LANE

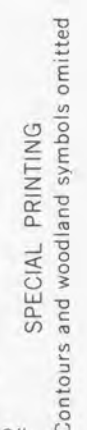
Medium-duty 4 LANE 16 LANE Unimproved dirt 4 LANE 16 LANE

 U. S. Route  State Route

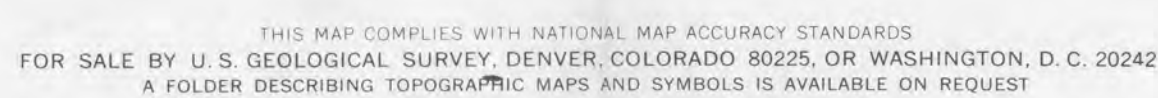
NEPHI, UTAH
N3930—W11145/15

1951

THIS MAP COMPLIES WITH NATIONAL MAP ACCURACY STANDARDS
FOR SALE BY U. S. GEOLOGICAL SURVEY, FEDERAL CENTER, DENVER, COLORADO OR WASHINGTON 25, D. C.
A FOLDER DESCRIBING TOPOGRAPHIC MAPS AND SYMBOLS IS AVAILABLE ON REQUEST



Areas covered by dashed light-blue pattern are subject to controlled inundation

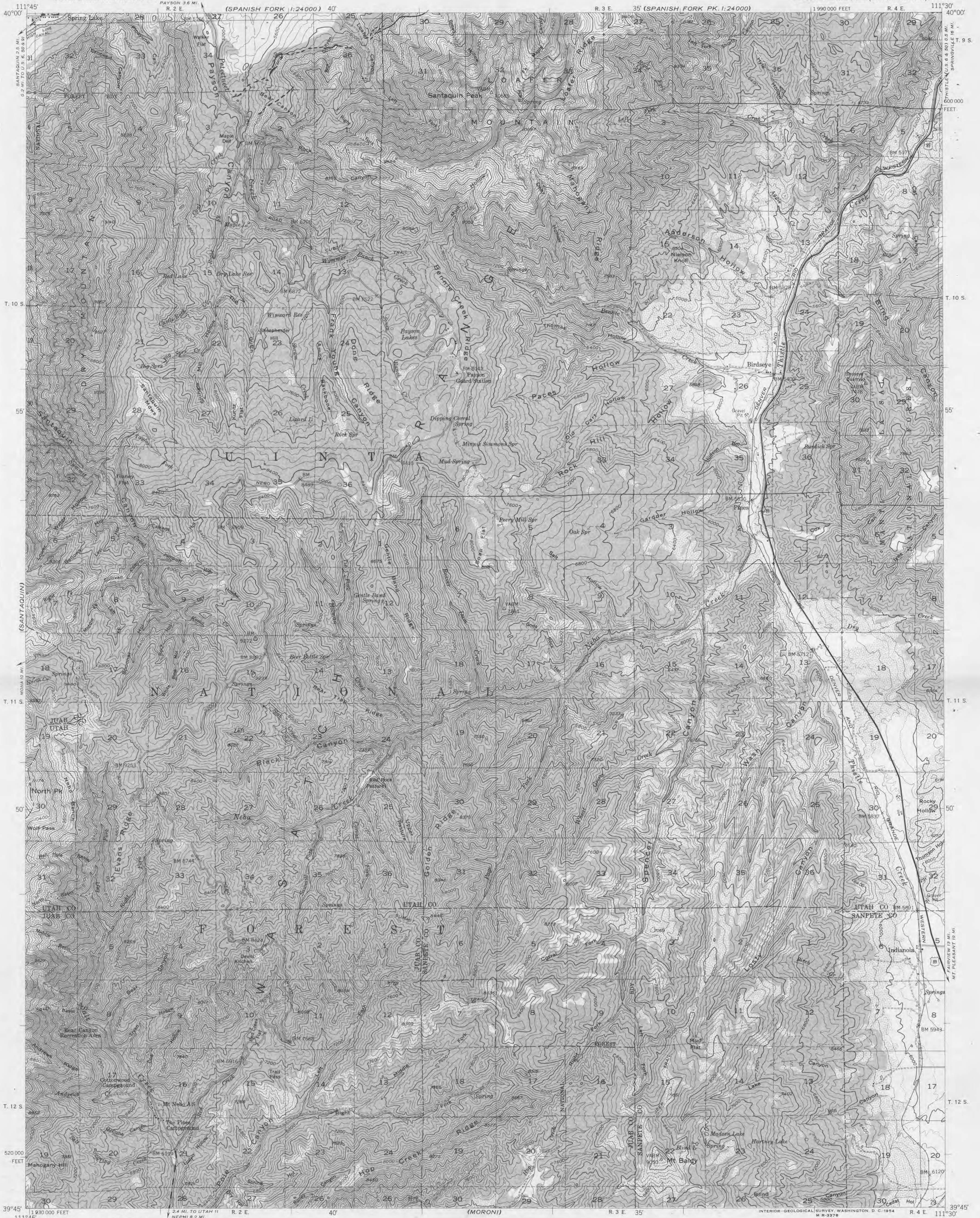


 U. S. Route  State Route



1966

AMS 3662 III NE-SERIES V897



Maped, edited, and published by the Geological Survey
Control by USGS and USC&GS
Topography from aerial photographs by multiplex methods
Aerial photographs taken 1947. Field check 1952
Polyconic projection. 1927 North American datum
10,000-foot grid based on Utah coordinate system, central zone
Dashed land lines indicate approximate locations



CONTOUR INTERVAL 80 FEET
DOTTED LINES REPRESENT HALF-INTERVAL CONTOURS
DATUM IS MEAN SEA LEVEL

SCALE 1:62,500



ROAD CLASSIFICATION
Heavy-duty 4 LANE 16 LANE Light-duty
Medium-duty 4 LANE 16 LANE Unimproved dirt
U. S. Route State Route

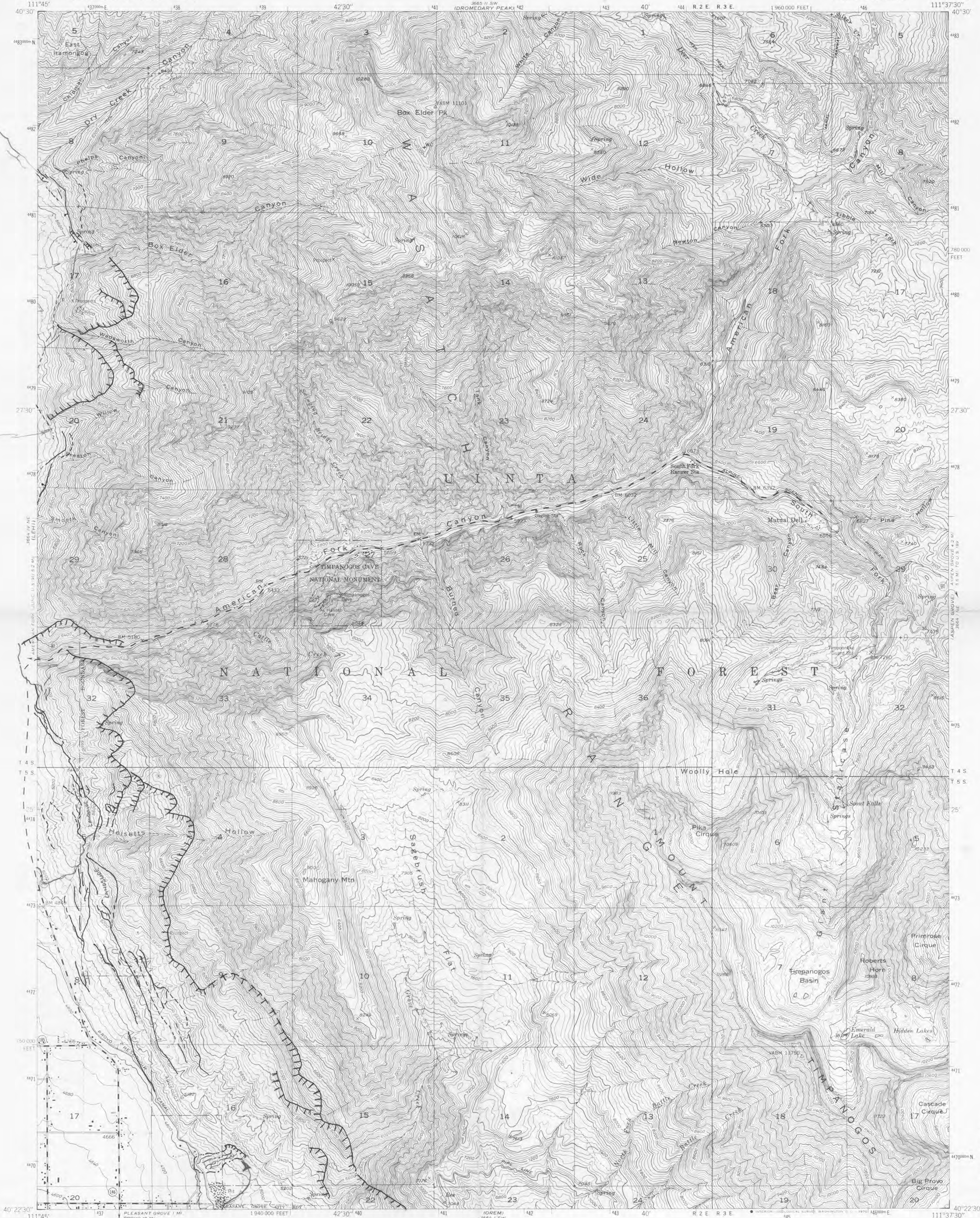
SANTAQUIN PEAK, UTAH
N3945-W11130/15

1952

Advance Sheet
Subject To Correction

UNITED STATES
DEPARTMENT OF THE INTERIOR
GEOLOGICAL SURVEY

TIMPANOGOS CAVE QUADRANGLE
UTAH-UTAH CO.
7.5 MINUTE SERIES (TOPOGRAPHIC)
NW/4 OREM 15 QUADRANGLE



Mapped, edited, and published by the Geological Survey

Control by USGS and USC&GS

Topography from aerial photographs by multiplex methods

Aerial photographs taken 1946. Field check 1948

Polyconic projection. 1927 North American datum

10,000-foot grid based on Utah coordinate system,

central zone

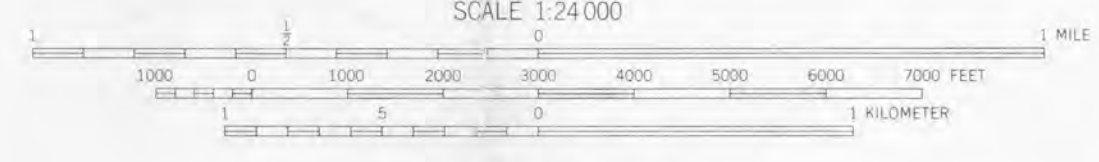
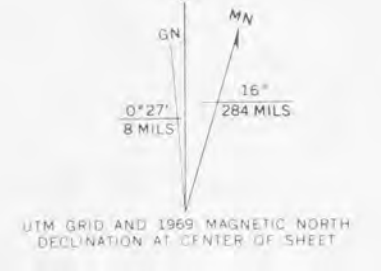
1000-meter Universal Transverse Mercator grid ticks,

zone 12 shown in blue

Revisions shown in purple; compiled from aerial photographs

taken 1969. This information not field checked

Purple tint indicates extension of urban areas



CONTOUR INTERVAL 40 FEET

DATUM IS MEAN SEA LEVEL

ROAD CLASSIFICATION
Medium duty
Light duty
Unimproved dirt
State Route

TIMPANOGOS CAVE, UTAH

NW/4 OREM 15 QUADRANGLE
N4022.5-W11137.5/7.5

1948
PHOTOREVISED 1969
AMS 3664 NW SERIES V897

SPECIAL PRINTING.
Contours and woodland symbols omitted

REPRODUCED FROM
1969

Timpanogos Cave, Utah
Proclamation Box Project

Advance Sheet
Subject To Correction

UNITED STATES
DEPARTMENT OF THE INTERIOR
GEOLOGICAL SURVEY

SPANISH FORK PEAK QUADRANGLE
UTAH-UTAH CO.
7.5 MINUTE SERIES (TOPOGRAPHIC)
SE/4 PROVO 15' QUADRANGLE



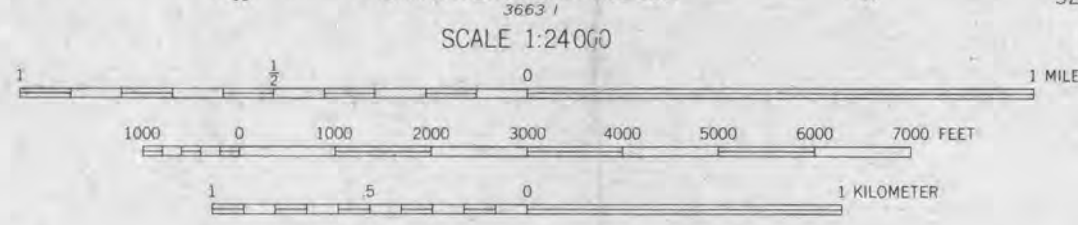
Mapped, edited, and published by the Geological Survey

Control by USGS and USC&GS

Topography from aerial photographs by multiplex methods,
and by plane-table surveys 1949
Aerial photographs taken 1946

Polycyclic projection, 1927 North American datum
10,000-foot grid based on Utah coordinate system,
central zone
1000-meter Universal Transverse Mercator grid tick,
zone 12, shown in blue

Revisions shown in purple compiled from aerial photographs
taken 1969. This information not field checked



CONTOUR INTERVAL 40 FEET
DOTTED LINES REPRESENT HALF-INTERVAL CONTOURS
DATUM IS MEAN SEA LEVEL

THIS MAP COMPLIES WITH NATIONAL MAP ACCURACY STANDARDS
FOR SALE BY U.S. GEOLOGICAL SURVEY, DENVER, COLORADO 80225, OR WASHINGTON, D.C. 20242
A FOLDER DESCRIBING TOPOGRAPHIC MAPS AND SYMBOLS IS AVAILABLE ON REQUEST

ROAD CLASSIFICATION
Heavy-duty ——— Light-duty ———
Medium-duty ——— Unimproved dirt ———
U.S. Route ——— State Route ———



SPANISH FORK PEAK, UTAH

SE/4 PROVO 15' QUADRANGLE
N4000-W1130/7.5

1949
PHOTOREVISED 1969
AMS 3664 II SE-SERIES V897

Provo Interior Res. Prods. Utah