
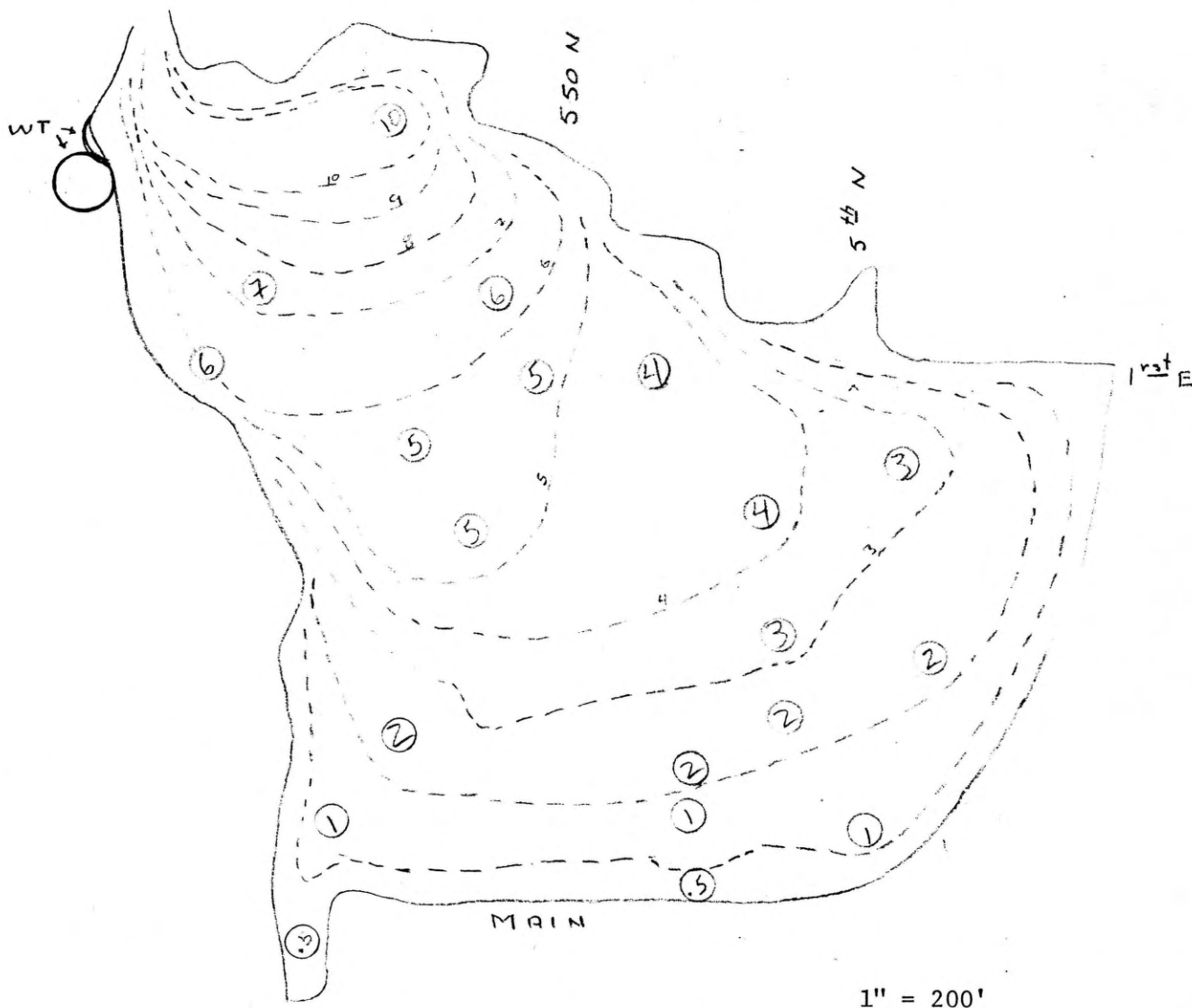


UTAH GEOLOGICAL AND MINERAL SURVEY

HAZARDS SECTION

N. 



Davis County base map
April, 1982

AREA: 17.92 acres
VOL: 2,827,000 ft³

② estimated thickness, ft
--4-- isopach contour

Figure: Rudd Creek Debris Flow
Isopach Map; thickness in feet

Investigation: W. Case, 15 June 83
B. Kaliser, Section Chief