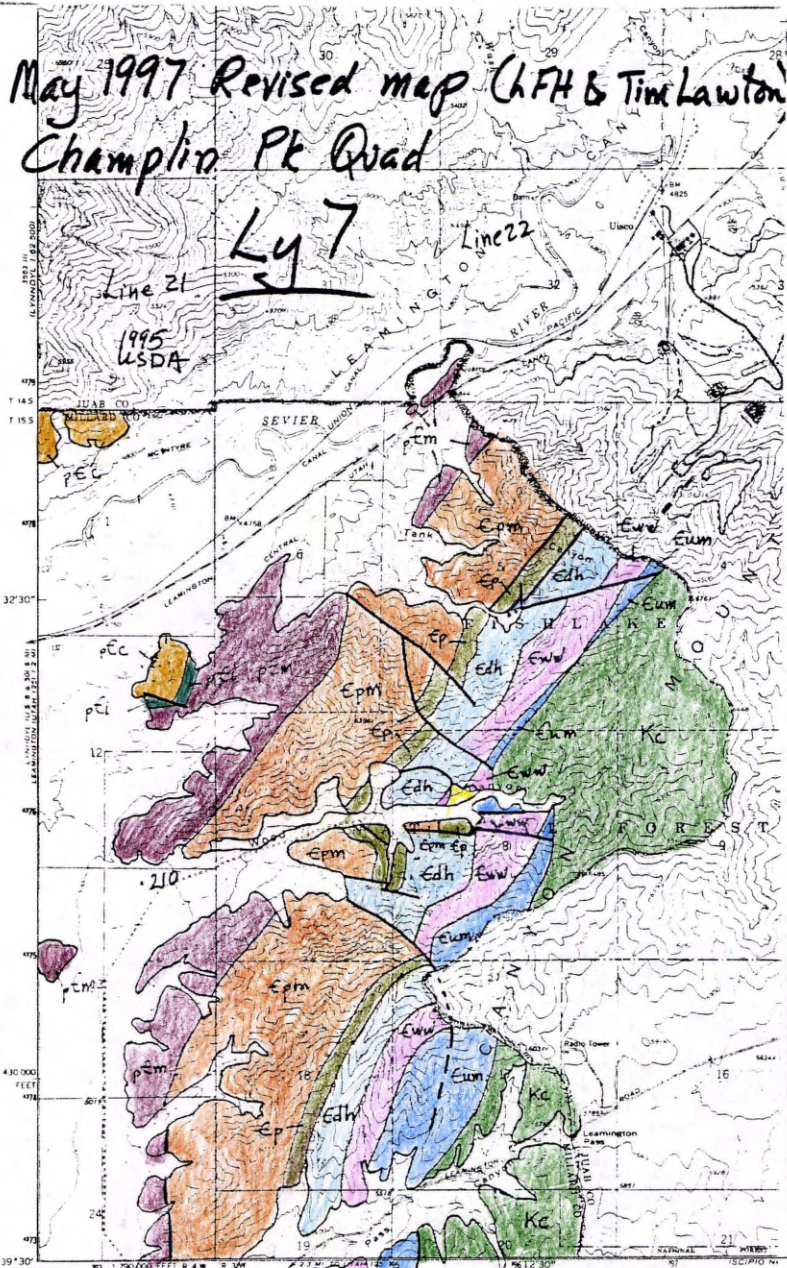


LFH COPY

May 1997 Revised map (LFH & Tim Lawton)
Champlin Pk Quad

Ly 7



Mapped, edited, and published by the Geological Survey
Control by USGS and USC&GS
Topography by photogrammetric methods from aerial
photographs taken 1965. Field checked 1967.
Projection: 1927 North American datum
10,000-foot grid based on Utah coordinate system, central zone
1000-meter Universal Transverse Mercator grid ticks.

SCALE
1 1000 2000 3000
CONTOUR IN
DOTTED LINES REPRESENT
DATUM IS X