

Exploration

Project Emergency Response Plan – Oquirrh

Date approved: 1 Aug 2015
Document version number: 3.4

arzu.downing@riotinto.com
russ.franklin@riotinto.com

In the event of an incident or emergency:

- remain calm;
- assess hazards;
- preserve life and prevent further injury; and
- minimise damage to property and the environment.

Rio Tinto 24/7 Emergency on-call Support

Project Manager: **Duane Olson - +1 801 554 9925**
Alternate Project Manager: **Brian Paull - +1 801 245 0477**

Office contact details:

Name	Address/Description of location	Phone & Fax
RTX Salt Lake City Warehouse	3316 W, 2100 S, Suite B, Salt Lake City, Utah, 84119	P: +1 801 647 6265 (warehouse cell phone)
RTX Salt Lake City Airport Office	224 North 2200 West, Salt Lake City, Utah, 84116	P: +1 801 204 3800 F: +1 801 238 2430
Rio Tinto Regional Centre	4700 Daybreak Parkway, South Jordan, Utah 84095	P: +1 801 204 4000
Rio Tinto Arbor Park Office	8315 West, 3595 South, Magna, Utah	P: +1 801 204 3709

Rio Tinto Staff and Contractor Numbers:

Name	Position	Phone
Duane Olson	Principal Geologist – Project Manager	+1 801 554 9925
Brian Paull	Senior Geologist – Alt Project Manager	+1 801 245 0477
Aaron Johnson	Project Coordinator	+1 801 428 7293
Ron Wyttenback	Project Coordinator	+1 218 838 5542
Bud Rivera	Project Coordinator	+1 218 576 3998
Arzu Downing	Senior HSE Advisor	+1 801 638 8562
Candice Wingerter	HSEC Coordinator	+1 604 408 4822
Harley English	Operations Manager	+1 801 231 6052
Todd Marks	Geologist	+1 801 201 5382
Bede Drieberg	Contractor Geologist	+1 801 258 1310
Robert Favela	Field Tech/Core Cutter	+1 801 710 3264
Nathan Killpack	Regional HSE Manager	+1 801 244 3148
Russ Franklin	Exploration Manager - Copper	+1 801 550 8769
Matt Jeschke	Regional Community & Relations Manager	+1 801 638 8459
Warehouse Cell Phone	SLC Warehouse – Call In/Out	+1 801 647 6265

Note: Incident Managers are highlighted in Orange

Emergency Services

Name	Address	Phone & Fax
All Emergencies – Hidden Treasure, Toole County		911 or +1-435-882-5600 Opt 1
Life Flight Service (provide coordinates in Lat, Long - in degrees, minutes.decimal minutes) – Do not need to call EMS (i.e. 911) after calling LF request, they will contact EMS.		+1 800-321-1911 or +1-208-367-3888 (from sat phone)
All Emergencies - within KUCC		+1 801-569-6211 or Channel 1 from Mine Radio
All Emergencies - South Butterfield Canyon <u>When</u> Butterfield Canyon road is closed		+1 801-569-6211 or Channel 1 from Mine Radio
All Emergencies - South Butterfield Canyon, <u>When</u> Butterfield Canyon road is open		911 or +1-801-840-4000
Non-emergency service numbers		
<i>Salt Lake County Sheriff (non-emergency)</i>	3365 South 900 West, Salt Lake City, UT 84119	Dispatch: +1 801 743 7000
<i>Tooele County Sheriff (non-emergency)</i>	47 South Main Street, Tooele, UT 84074	+1 435 882 5600
<i>Utah Highway Patrol</i>	4501 South, 2700 West, Salt Lake City, UT 84114	+1 801 965 4518
<i>Utah Department of Environmental Quality</i>	195 North, 1950 West, Salt Lake City, Utah http://www.superfund.utah.gov/spills.htm	Spill Incident Reporting (>25 gal): +1 801 536 4123 (24 hrs) Information Line: +1 800 458 0145
<i>Poison Central</i>	National	+1 800 222 1222
<i>OSHA 24-hour hotline</i>	National	+1-800-321-6742
<i>National Interagency Fire Center (non-emergency)</i>	National	+1 208 387 5512
<i>Life Flight Service – Keith Simpson (Operations Director)</i>	250 North, 2370 West, Salt Lake City	+1 801 520 6550

Drill Site Phone Numbers:

Name/Location	Phone
Tonatec Atlas 4000 rig	Cell: +1 801-541-7235
Tonatec CT20 rig	Cell: +1-801-633-0712

Rio Tinto Exploration Radio Frequencies:

RTX		
Channel 1	Rx 151.775	91.5
	Tx 158.400	91.5
	Rx 151.625	136.5
	Tx 151.625	136.5

Key KUCC Contacts:

Name	Position	Phone
Tammy Campos	Lark Gate Security	+1 801 569 6759
Jeremy Isbell	Environmental Analyst	+1 801 569 6430
Zeb Kenyon	Senior Env Engineer	+1 801 569 6035
Tony Johnson	Senior Coordinator - Contractor Safety, Mine - Safety and Health	+1 801 913 3862
Wade Skinner	H&S Advisor – Emergency Response	+1 801 550 3806
Ken Wood	Training Coordinator - Pit License	+1 801 569 6203
Mary Joy Sudbury	Contractor Orientation Coordinator	+1 801 204 3709
Mine Site Emergency/Lark Gate	Emergency	+1 801 569 6211 or Radio Channels 1
Production Control	Check-in/out	+1 801 569 6290
Lark Gate	Security at the Gate – Non-emergency	+1 801 569 6248
Copperton		+1 801 569 6911
MAP Plant		+1 801 204 3311
KES		+1 801 569 6622
Smelter		+1 801 569 6499

Key Contractor & Local Services:

Name	Position	Phone
Tonatec Exploration LLC 1645 North 500 West Mapleton, UT 84664	Steve Bills – General Manager	+1 801 310 1628
	Paul Horschel – Operations Manager	+1 801 243 1240
	Tim Tremayne – HSE Coordinator	+1 385 228 6494
Staker & Parson	Kelly Ross – Field Superintendent	Cell: +1 435 882 1395 Office: +1 801 455 9721
Thomas Petroleum (KUCC & SBC only)		Office - +1-801-298-3252 Representative - +1-801-397-8332
NAI	Kelly Ross – Field Superintendent	Cell: +1 435 882 1395

Evacuation:

Evacuation options will depend on the type of the emergency and seriousness of injury/illness, location of the field crews and/or drill sites, daylight, surface conditions, etc.

FOR EMERGENCIES at Hidden Treasure (Tooele County)

1. **For serious medical emergencies, call Lifeflight +1 800 321 1911, (or +1-208-367-3888 from Sat phone)**

Provide the *Landing Zone* coordinates below. Do not call 911 after, as Life Flight dispatch will call ground EMS. Send extra people to go to the landing zone, as well as the ambulance meeting point (see below).

N 40° 23.876, W 112° 16.239
Note: Elevation is approximately 9500 ft

2. **For less time critical, but serious emergencies call Tooele County EMS (Ground EMS) at 911 or +1 435-882-5600 then select Option 1.** Direct them to the Jacob City Trailhead, South of Stockton.

Directions to provide to ground EMS: *“Follow Connor Rd South, through Stockton. Turn left onto Silver Ave (at the Sinclair Station). Continue on Silver Ave; it will veer right and become Copper St. Stay on Copper St. and follow signs to Jacob City Trailhead. One of our people will come down to meet you.”*

Have someone go to meet the Ground EMS at the Ambulance meeting point; Jacob City Trailhead parking lot (See ‘A’, map below). Send extra people to meet EMS, and to provide traffic control for additional vehicles that may show up (to prevent bottle-necks on the road).

3. **If the severity of injury is minor,** use below instructions to drive to nearest hospital/clinic.

Hospital	Capability	Route/Distance/Time
Mountain West Medical Centre, Tooele UT 2055 North Main Street, Tooele, UT 84074 + 1 435 843 3600	Emergency Service 24/7 ICU	From Stockton – Distance: ~9 miles (16 – 30 mins, depending on traffic and construction) <ul style="list-style-type: none"> • Head north on UT-36 N/N Connor Ave • Continue to follow UT-36 N (Main St), 8.9 mi • Use the left 2 lanes to turn left onto E 2000 N • Destination will be on the right
Urgent Care of Tooele Valley 1244 North Main Street, Suite 201, Tooele, UT 84074 +1 435 882 3968	Urgent Care (for minor/non-serious injuries) Open (Monday-Sunday 9am-10pm)	From Stockton – Distance: ~8 miles (15 - 30 mins, depending on traffic and construction) <ul style="list-style-type: none"> • Head north on UT-36 N/N Connor Ave • Continue to follow UT-36 N, (Main St), 8 mi • Destination will be on the right

Hidden Treasure Drill Site and Emergency Response Locations



Lat/Long Coordinates for **Hidden Treasure Landing Zone**
N 40° 23.876, W 112° 16.239

Remember to send extra people to meet EMS and provide traffic control

LIFE FLIGHT MEDIVAC PROTOCOLS

- **In case of a serious injury, call LIFE FLIGHT: +1 800 321 1911, (or +1-208-367-3888 from Sat phone) to request medivac service.**

Lat/Long Coordinates for **Hidden Treasure Landing Zone**

N 40° 23.876, W 112° 16.239

- **GET ready to provide the following information**
 - ✓ Name, and Company Information (i.e., Rio Tinto Exploration)
 - ✓ Number of patients, type and severity of patients
 - ✓ Call back number and/or contact
 - ✓ Local weather conditions
 - ✓ Name and location of patient(s)
 - ✓ Weight (approx.)
 - ✓ Coordinates and major landmarks of patient location – Provide designated Landing Zone coordinates.
- **If you are calling Life Flight Dispatch first, do not call 911 after, as LF dispatch will call ground EMS.**

NOTE: Life flight uses WGS 84 (Latitude, Longitude) for coordinates in degrees, minutes .decimal minutes (i.e. DD°MM.mmm).

WHEN SHOULD YOU CALL LIFE FLIGHT DIRECTLY?

- **When the mechanism of injury is;**

- ✓ Pelvic fracture
- ✓ Multiple victims
- ✓ Vehicle rollover
- ✓ Falls from > 15ft
- ✓ Major burns to the body
- ✓ Major crush injury
- ✓ Spinal cord/column injury
- ✓ Partial or total amputation
- ✓ Penetrating trauma

- **OR when**

- ✓ ground transportation stresses resources
- ✓ Patient extraction time is > 20 min.
- ✓ Remote Area
- ✓ Hoist/Rescue is required



When in doubt, CALL!

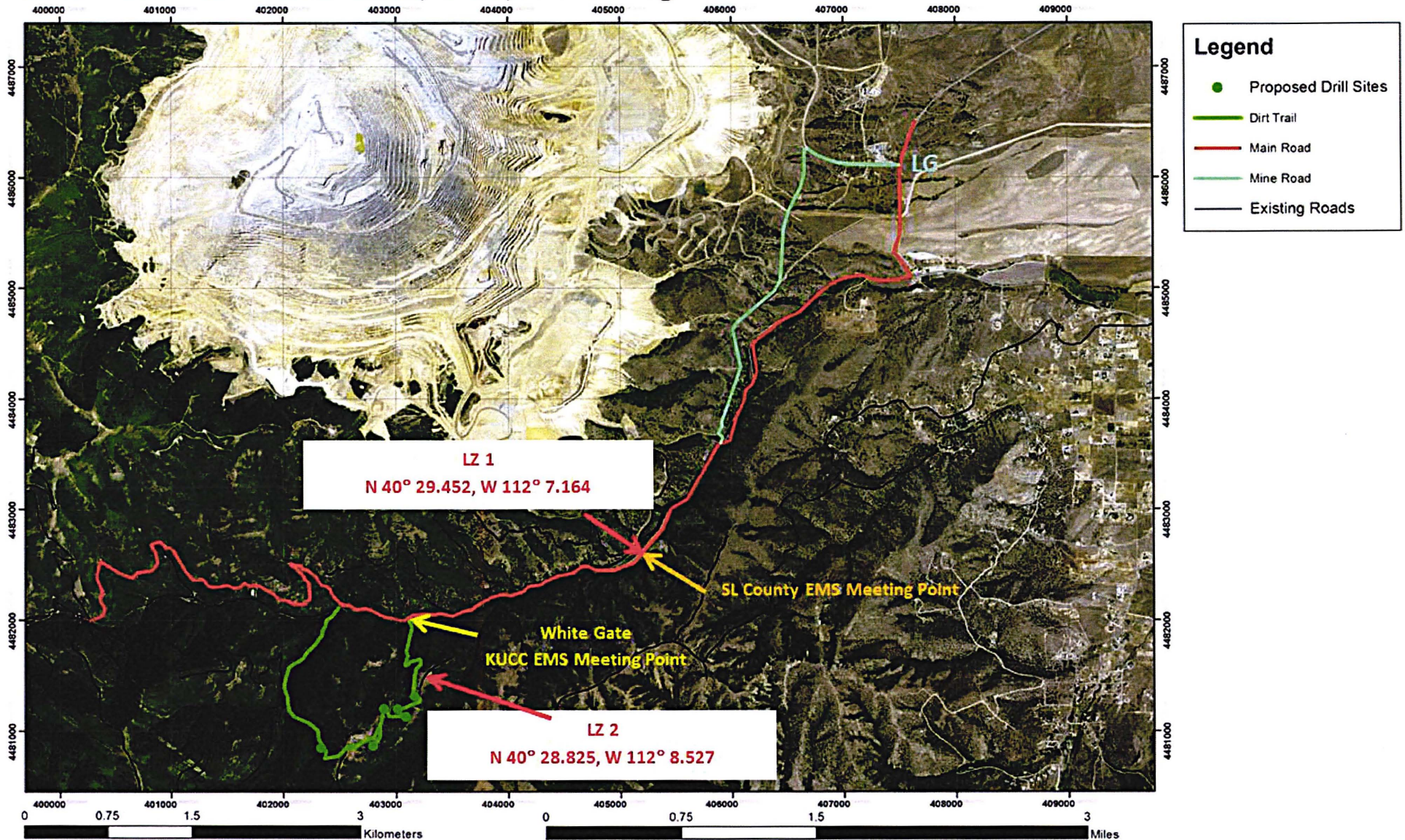
FOR EMERGENCIES WITHIN KUCC and South Butterfield Canyon (when Butterfield Canyon road is closed)

- Call KUCC EMS (+1 801 569 6211 or **Channel 1** from Mine Radio) and follow instructions given.
 - Tell them where you are calling from, eg “**Rio Tinto Exploration Drill site at South Butterfield Canyon**” and explain the emergency situation. Give as much detail as possible about the emergency situation (eg. If medical, nature of the injury, etc.), location, logistic resources, etc.
- For South Butterfield Canyon sites – Meet Ground KUCC EMS at the **White Gate** to escort to incident site.
- For Medivac, provide *Landing Zone* information (LZ 1 or 2, depending on where you are)

Lat/Long Coordinates for South Butterfield **Landing Zone 1**
(In degrees, minutes.decimal minutes):
N 40° 29.452, W 112° 7.164

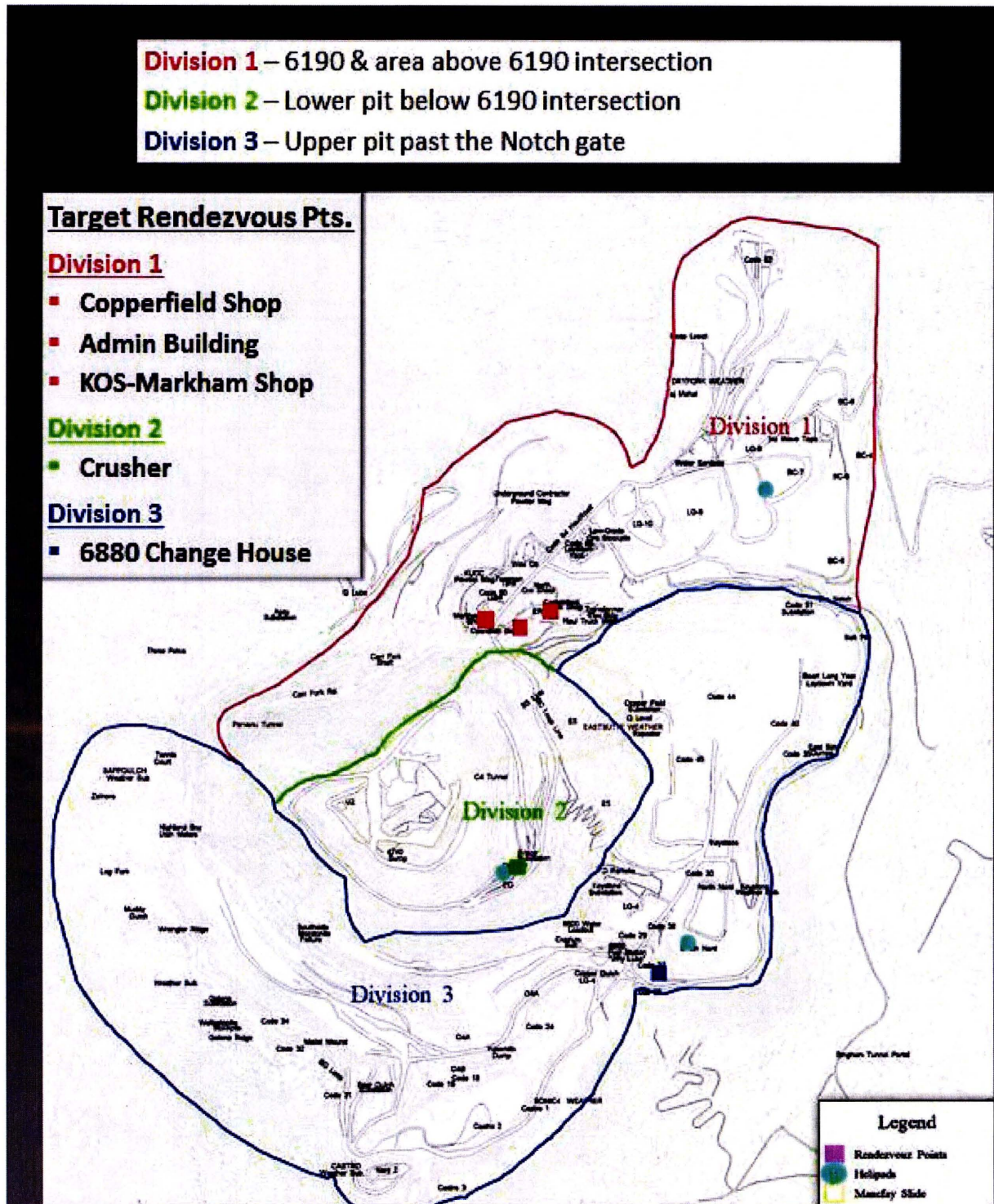
Lat/Long Coordinates for South Butterfield **Landing Zone 2**
(In degrees, minutes.decimal minutes):
N 40° 28.825, W 112° 8.527

South Butterfield- Access Roads, Gates, and Landing Zones

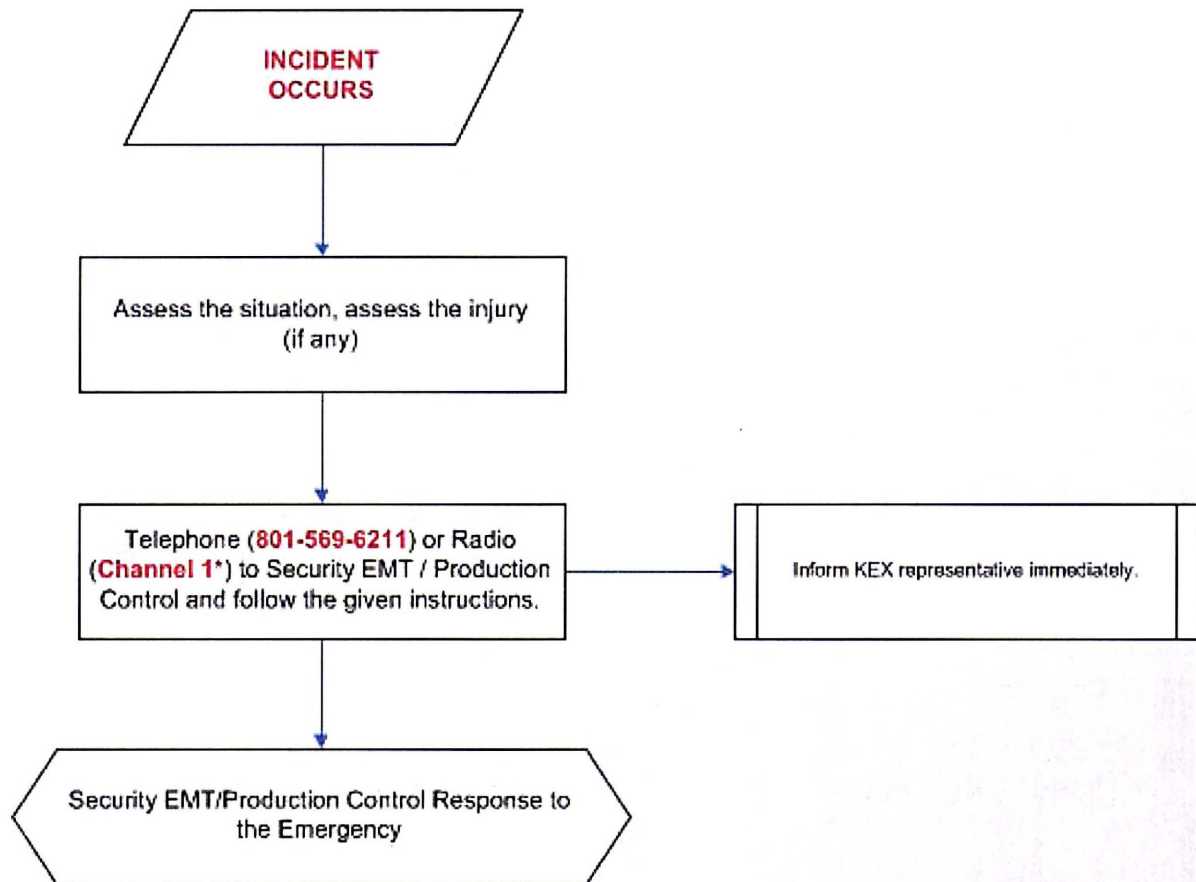


KUCC EVACUATION PROTOCOL

- In case of an Emergency Evacuation order at KUCC, go to designated Meeting Point (as indicated below map).
- If you are outside of any KUCC Evacuation Divisions, stay where you are and wait for further instructions.



KUCC EMERGENCY ACTION PLAN



* To report an emergency, Use Channel 1 – Mine Operation (Production Control), and announce "**MAY-DAY, MAY-DAY**" at the beginning of transmission.

IMPORTANT NOTE!

If you are reporting **Medical Emergency**:

- State your name, specific location, condition of the injured person (without his/her name) .
- Report if the injured is in a confined space, elevated area, trapped in or beneath equipment or any other information that will aid in providing the proper emergency response.

If you are reporting **Spill**:

- Only report spills that can not be contained, is about to become a threat to persons, community and process operations and or the environment to the Production Control.
- Small leaks (i.e. <25 gal) confined to a limited area are responded to and cleaned up as part of normal operating procedures.

FOR EMERGENCIES at South Butterfield Canyon

(when Butterfield Canyon road is open)

- Call Salt Lake County EMS (**911 or +1 801 840 4000**) and follow instructions.
 - Tell them you are calling from “**Rio Tinto Exploration Drill site at South Butterfield Canyon**” and explain the emergency situation. Give as much detail as possible about the emergency situation (eg. If medical, nature of the injury, etc.), location, logistic resources, etc.
- For South Butterfield Canyon sites – Meet Ground EMS at the **Landing Zone 1** to escort to incident site.
- For Medivac, provide below one of the **Landing Zone** information (depending on where you are)

Lat/Long Coordinates for South Butterfield **Landing Zone 1**

(In degrees, minutes.decimal minutes):

N 40° 29.452, W 112° 7.164

Lat/Long Coordinates for South Butterfield **Landing Zone 2**

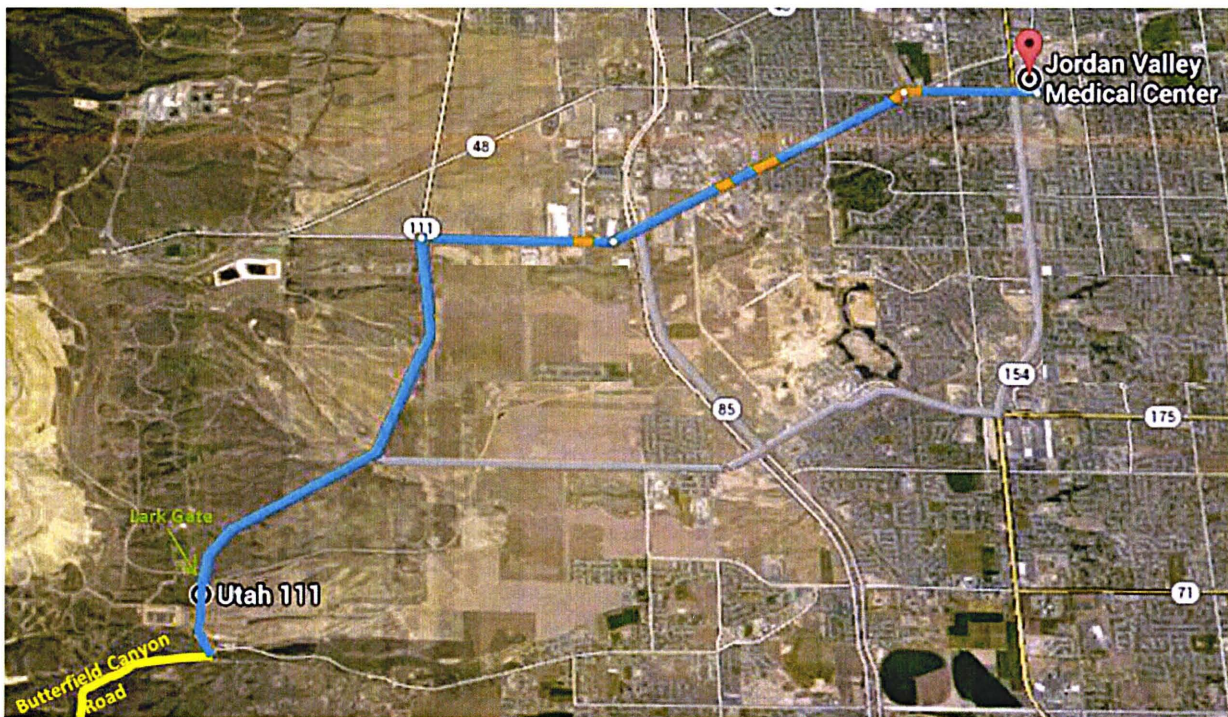
(In degrees, minutes.decimal minutes):

N 40° 28.825, W 112° 8.527

- If the severity of injury is minor or ground EMS instructs the patient to be transferred to a nearest hospital, use below instructions to go to nearest hospital/clinic.

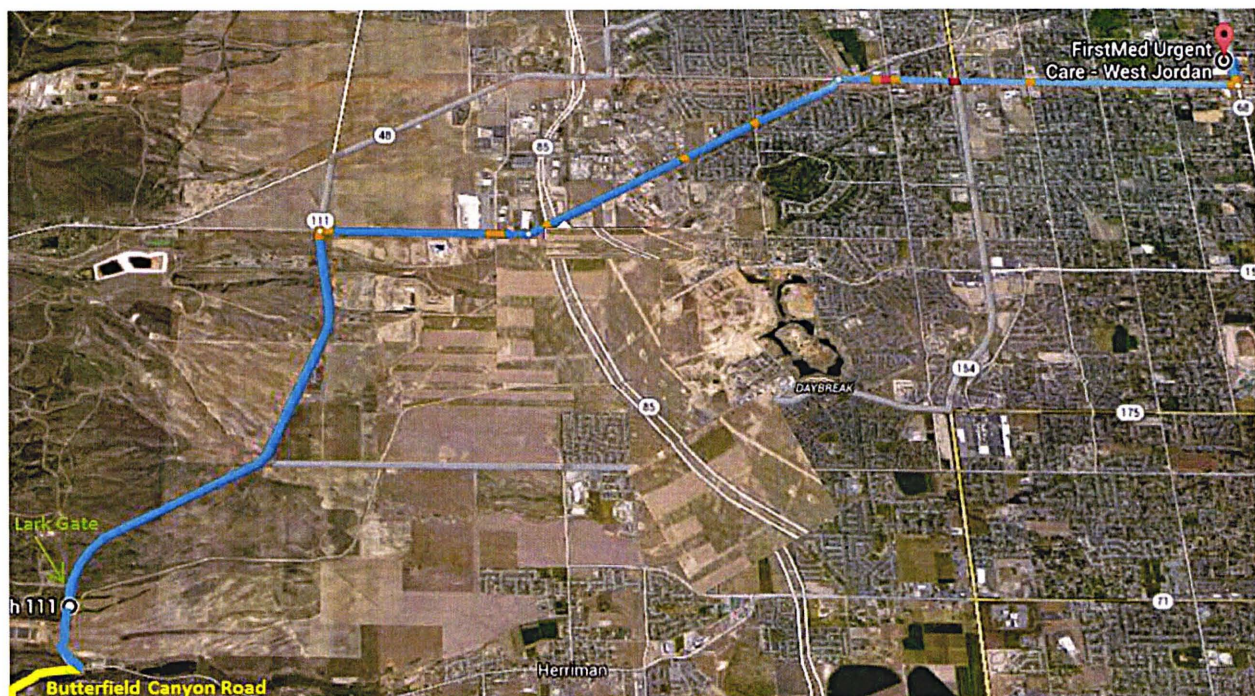
Driving Directions for Jordan Valley Medical Centre Hospital (From KUCC Lark Gate and Butterfield Canyon Road)

Medical Centre	Capability	Route – Distance - Time
<p>JORDAN VALLEY MEDICAL CENTER HOSPITAL</p> <p>3580 West 9000 South, South Jordan, UT 84088</p> <p>+ 1 801 561 8888</p>	<p>Emergency Service 24/7 ICU Trauma II Centre</p>	<p><u>From Lark Gate - Distance: ~ 9.5 miles (18 mins)</u></p> <ul style="list-style-type: none"> • Head East from Bingham Mine Entrance (Lark Gate) • Turn right at W 10200 S • Continue onto W9665S W Old Bingham Hwy • Turn right at W9000S • Arrive at destination on the left <p><u>From Butterfield Canyon Road - Distance: ~ 15 miles (25 mins)</u></p> <ul style="list-style-type: none"> • Head North from Butterfield Canyon Road on UT-111 • Turn right at W 10200 S • Continue onto W9665S W Old Bingham Hwy • Turn right at W9000S • Arrive at destination on the left



Driving Directions for First Med Urgent Care Clinic (From KUCC Lark Gate and Butterfield Canyon Road)

Clinic	Capability	Route – Distance - Time
First Med Urgent Care 8822 Redwood Road E# 122, West Jordan, UT +1 801 256 0009	Urgent Care (for minor/non-serious injuries) Open Monday – Sunday (7am – 8pm)	<p>From Lark Gate - Distance: ~ 12 miles (25 minutes)</p> <ul style="list-style-type: none"> • Head East from Bingham Mine Entrance (Lark Gate) • Turn right at W 10200 S • Continue onto W9665S W Old Bingham Hwy • Turn right at W9000S • Turn left at 2200 W • Take the 3rd right onto W 8660 S/Gardner Ln • Take the 1st right onto S 1920 S • S 1920 W turns slightly right and becomes S 1850 W • Arrive at destination on the right <p>From Butterfield Canyon Road - Distance: ~ 21 miles (35 mins)</p> <ul style="list-style-type: none"> • Head North from Butterfield Canyon Road on UT-111 • Turn right at W 10200 S • Continue onto W9665S W Old Bingham Hwy • Turn right at W9000S • Turn left at 2200 W • Take the 3rd right onto W 8660 S/Gardner Ln • Take the 1st right onto S 1920 S • S 1920 W turns slightly right and becomes S 1850 W • Arrive at destination on the right



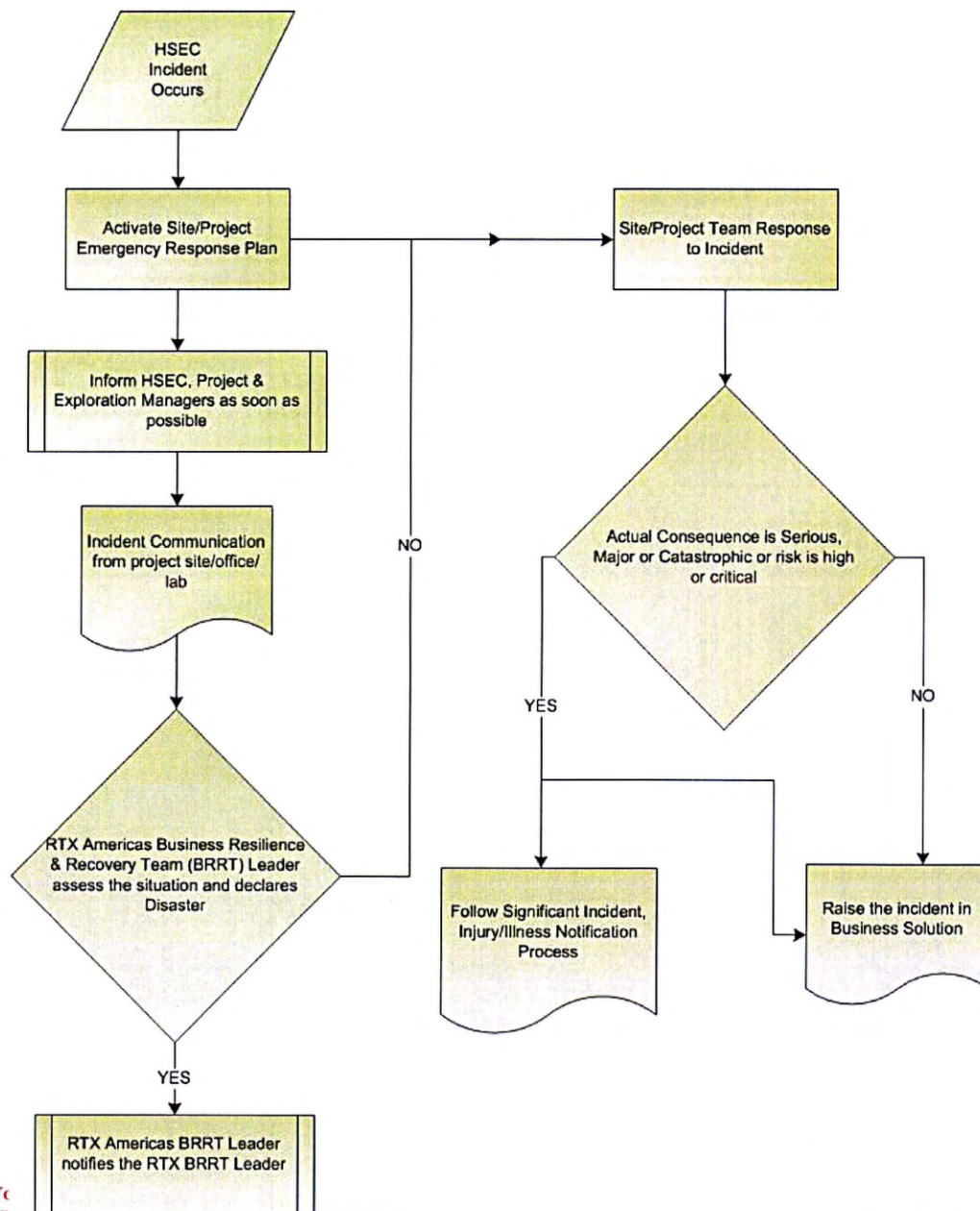
Project/Site Specific Emergency Scenario Responses

The following emergencies may be encountered during this project:

- Medical Injury outside KUCC
- Overdue Crew Member
- Major Fuel Spill
- Venomous Snake/Insect Sting Bite
- Wildfire
- Fire/Earthquake

Any of the above emergencies may require an evacuation. It is RTX's primary concern that all emergency situations are managed in an organized and efficient manner. Emergency response plans for each of the above situations are explained in the following sections.

RTX Americas North America Emergency Plan Activation & Incident Notification Process



Medical – Injury (outside KUCC property)

Threat Description	Personnel injured while working in the field - Medical Treatment required for injury (both serious and minor)
General Outline of Emergency Response	Ensure personnel are clear of potential hazard, administer first aid to injured person, and contact emergency responders and RTX AMR management.
Emergency Response Resources and their Location	Cell and Sat Phones, a copy of the ERP and a first aid kit on site and at parked vehicles

Action Required	Role Responsible	Comment
This is a detailed list of emergency actions to be undertaken to bring the event under control.	This is who will perform each action step.	This is additional information to help the person performing the action.
1. Make sure all personnel are away from potential hazards.	On-site non-Injured personnel	Stop, look around and make sure you understand what caused the injury to person requiring your help. Don't become another victim to the hazard.
2. Administer first aid as required.	On-site non-Injured personnel	Check airway, breathing and circulation, stop any bleeding, protect the wound and treat for shock (wrap injured person in blanket if in shock)
3. (A) If the injury is life threatening, call Lifeflight (see guidance) +1 800-321-1911 , (or +1-208-367-3888 from Sat phone) OR 911 (+1 435 882 5600 for Tooele County or +1 801 840 4000 for SL County) (B) If the injury is not threatening to life or limb, drive the patient to a medical clinic or hospital (refer to Hospitals Section)	On-site non-Injured personnel	Remain calm while speaking to the emergency responders. Panic or rushing will not increase response time by any meaningful margin.
4. Give them your call-back number:	On-site non-Injured personnel	Responders may not be able to locate your position, or may want to call back with more information that you can use to treat the victim.
5. Leave all communication equipment on Stand-by.	On-site non-Injured personnel	Give them your cell number.
6. Notify Project Manager and HSEC as soon as possible.	On-site non-Injured personnel	See Contact Details Section
7. In event for <u>any inpatient hospitalization, amputation, or eye loss due to work</u> , the incident	Project Manager & HSEC	Call OSHA 24-hour hotline 1-800-321-6742

You are responsible for ensuring you have the current version. For Rio Tinto Exploration internal use only.

must be reported to OSHA within 24 hours of learning about it In the event of a work related <u>fatality</u> the incident must be reported within 8 hours of finding out about them.		
---	--	--

Overdue Crew Member

Threat Description	Crews working or travelling failing to check in with the SLC Warehouse at scheduled time - Injury or death resulting from failure to respond in timely fashion
---------------------------	--

General Outline of Emergency Response	<p>Crews are considered to be overdue if they miss scheduled check-in times with the SLC Warehouse or have not arrived at a pre-designated destination or cannot be contacted by their planned return time. Should this happen, the Call-In person will put the following plan into action.</p> <ul style="list-style-type: none"> • Attempt to contact the crew directly and contact other crews working nearby. • Notify the project manager about the possible missing crew • After one hour has passed, contact RTX NAR management immediately.
--	--

Emergency Response Resources and their Location	<ul style="list-style-type: none"> • All crews must have a reliable form of communication on their person (cell phones – with coverage, or satellite phones) • All crews must check-in with Warehouse cell phone and sign in on the board at the Warehouse during the work day.
--	---

Action Required	Role Responsible	Comment
This is a detailed list of emergency actions to be undertaken to bring the event under control.	This is who will perform each action step.	This is additional information to help the person performing the action.
1. Attempt to contact the missing crew directly by calling their cellular and/or satellite phones and the phone number of their final destination as reported on the daily log in. Try to locate vehicle using online vehicle tracking system	Assigned Call In Person	Crews are instructed to leave SAT phones off except for emergency. Contacting cell phone or radio should be first option.
2. Try to contact any other employees or personnel in the area to verify crew is overdue and to assist with the search.	Assigned Call In Person	Make sure crews verify identity and contact information of other personnel working in the area.
3. Contact the appropriate search and rescue service. In most cases this will be a county sheriff. Be prepared to give the location data from the	Assigned Call In Person	See Contact Details Section

morning log in and details on the missing crew and vehicle.		
4. Notify the appropriate RTX AMR management as soon as possible.	Assigned Call In Person	See Contact Details Section
5. Identified Kennecott personnel might have to assist with the search due to limited access to some parts of the project area (gates, mine boundary, etc.).	Kennecott Personnel	

Major Fuel Spill

Threat Description	Major spill of fuel to soil or snow (> 25 gallon), or any spill to a water body or spill that has the potential to impact waterways (wet or dry) during drilling or other exploration activities.
---------------------------	---

General Outline of Emergency Response	Follow the Three C's principle: Control – the source of the spill if possible Contain – the spill Clean-up – the contamination
--	--

Emergency Response Resources and their Location	Spill Kits – absorbent pads and a 55 gallon drum with clamp lids at drill site. Personal Protective Equipment – Gloves and eye protection available on site. Hand tools – shovels and spades at drill site and in crew trucks. Containment/storage – plastic sheeting, absorbent pads, empty drums and plastic pails on site. Communications – Cell and sat phones Environmental emergency contacts – available on the Project
--	---

Action Required	Role Responsible	Comment
This is a detailed list of emergency actions to be undertaken to bring the event under control.	This is who will perform each action step.	This is additional information to help the person performing the action.
1. Eliminate any source of spark.	Person who discovers spill	
2. Attempt to control, confine and clean up all spills immediately (if safe to do so).	N/A	All spills regardless of size or whether or not they are cleaned up completely will be reported to the RTX.
3. Isolate the source of the spill if possible and safe to do so.	Person who discovers spill	Wear appropriate PPE.
4. Contain the spill – OSC to organize personnel to contain spill using hand tools, packed soil, snow etc. to create berms or trenches as required.	On-Scene Coordinator	Wear appropriate PPE. Keep ground disturbance to a minimum.
5. Try to prevent any spill on land from reaching any water body.	On-Scene Coordinator	


6. If the spill has reached a waterway, use absorbent pads to capture the spill.	On-Scene Coordinator	
7. Recover free product from waterways, within berms, and the ground as much as possible using absorbent pads, bailers, etc.	On-Scene Coordinator	
8. Recover contaminated soil and clean-up materials under the guidance of the On-Scene Coordinator.	On-Scene Coordinator	
In an event the spill is too large to be controlled by the crew on site or causes a safety threat, the following steps should be taken.		
9. While remaining crew members continue to work on spill, contact RTX representative	On-Scene Coordinator	Refer to the Emergency Contact card for the Project Manager and/or Project Geologist numbers.
10. Be prepared to give the following information: Type of spill, approximate volume and using the MSDS sheet, the hazardous chemical(s) listed and the specific gravity of the hazardous chemical(s).	On-Scene Coordinator	SDS/MSDS sheets for all hazardous materials must be kept on site.
11. Explain the physical on-ground situation (soil type, slope, water body or wetland etc)	On-Scene Coordinator	Is the spill on flat or sloped ground? How large is the spill volume? Is the spill near a wetland/open water body if so, how far or is the spill in the resource itself?
12. Request other project personnel be dispatched to site, for assistance and any tools or equipment needed to clean up spill (this may include heavy equipment)	On-Scene Coordinator	Don't be afraid to ask for resources. Better to have too many than not enough.
13. RTX representative will dispatch personnel and equipment/operator to site, so they can assist with clean up.	Project Geologist/Coordinator or more senior management	
14. In the event spill cannot be readily cleaned up and requires more resources, the RTX representative will contact a spill cleaning company and provide information provided in Step 3.	Project Geologist/Coordinator or more senior management	Staker & Parson – 801-258-3900
15. In event spill is > 25 gallons or causes a sheen on surface water then notify Div. of Environmental Response and Remediation (within 24 hours) and provide information provided in Step 3.	Project Manager/Geologist	Utah Division of Environmental Response and Remediation 1-801-536-4123 (24 hours)


Additional Major Spill Notification Information

Reporting Procedure	Name	Department	Phone Numbers
1. Report fire to Project Manager/Geologist	Duane Olson Brian Paull	Rio Tinto Exploration	Refer to Project Emergency Contact Card
2. Project Manager/Geologist will notify the appropriate agencies	Emergency Spill Hotline (if the spill is > 25 gallons or causes a sheen surface on water	Utah Division of Environmental Response and Remediation	(801) 536-4123
	If the leak or spill results in the discharge, causes a film or sheen on the water's surface or leaves sludge or emulsion beneath the surface.	National Response Center	(800) 424-8802
	If the spill or leak results in the discharge of > 100 barrels of liquid.	Utah Division of Oil & Gas (DNR)	(801) 538-5321

Venomous Snake, Insect Sting/Bite

Threat Description	Venomous snake or insect bite
General Outline of Emergency Response	<p>Calm victim, Wash and stabilize affected area. Call Emergency Medical Services (EMS) for instructions (911). If instructed by EMS, transport to nearest Medical Center (see accompanying maps and directions)</p>
Emergency Response Resources and their Location	<ul style="list-style-type: none"> ✓ First aid kits located around the warehouse ✓ Cellular and satellite phones available on site ✓ Personnel who has allergies should carry their own epi-pens

Action Required	Role Responsible	Comment
This is a detailed list of emergency actions to be undertaken to bring the event under control.	This is who will perform each action step.	This is additional information to help the person performing the action.
1. Remain calm and assess the situation for additional hazards to you, the injured and others.	On-Scene Coordinator, Co-worker or victim	
2. Move the injured to a safe location if additional hazards exist and it is safe to do so for both you and the injured.	On-Scene Coordinator, Co-worker	
3. Calm the victim and assess the injuries.	On-Scene Coordinator, Co-worker	
4. Call EMS 911 (or +1 801 840 4000 for SL County, +1 435 882 5600 for Tooele County).	On-Scene Coordinator, Co-worker or victim	
5. Follow EMS instructions.	On-Scene Coordinator, Co-worker or victim	
In the case of a spider bite <ol style="list-style-type: none"> 1. If possible make a positive identification (this will help to diagnose the problem). 2. Cleanse the site of the spider bite well with water. 3. Apply a cool compress over the bite location, and if the bite is on an arm or a leg, tie a snug bandage above the bite to help slowly or halt the venom's spread. 4. Get medical care to receive antivenom. 	On-Scene Coordinator, Co-worker or victim	<p>Black Widow Spider.</p>  <p>The venom of a black widow spider is particularly dangerous, because one cannot feel the bite when it occurs, and when the person discovers it, it is can already be infected. The bite is normally sensitive 48 hours after it occurs.</p>

		<p>Brown Recluse Spider</p>  <p>BR bite is rarely deadly, but it can be serious, producing severe flu like symptoms such as nausea, chills and fever. Necrosis, which breaks down cells and tissues at the site of the bite, can create an open wound that is slow to heal.</p>
<p>In the case of a bee sting;</p> <ol style="list-style-type: none"> 1. Wash the site with water. 2. Stinger can be removed using 4x4 inch gauze wiped over the area or by scraping a fingernail over the area. 3. Never squeeze the stinger or use tweezers. 4. Apply cold to reduce the swelling. 5. Do not scratch the sting. 	On-Scene Coordinator, Co-worker or victim	
<p>In the case of a Snake Bites:</p> <ol style="list-style-type: none"> 1. Allow bite to bleed freely for 15-30 secs. 2. Cleanse the bite area with water. If available, rapidly disinfect the area with Betadine, (assuming you're not allergic to iodine, fish or shellfish). 3. Keep bitten part still and at or below heart level 4. DO NOT <ul style="list-style-type: none"> Cut or make incision at the bite marks. Try to suck out the venom Apply ice or any kind of cooling to the patient. 5. Remove clothing (pant legs, shirt sleeves, rings, jewellery on bitten area) <ol style="list-style-type: none"> 1. Apply <i>Extractor Pump</i> until there is no more drainage from fang marks. Extractor can be left in place 30 mins or more if necessary. It also aids in keeping the venom from spreading by applying a negative pressure against the tissue where the venom was initially deposited and creates a gradient, which favours the movement of venom toward the Sawyer's external 	On-Scene Coordinator, Co-worker or victim	

<p>collection cup.</p> <p>2. Get medical care to receive antivenom.</p> <p>3. DO NOT permit removal of Sawyer Extractor until you are at a facility ready and able to administer antivenom. As soon as the Extractor is released the venom will spread causing the usual expected problems of venomous snakebite. The hospital at this time must be prepared to administer the antidote (antivenin)*</p>		
<p>6. Transport victim if instructed by EMS.</p>	<p>On-Scene Coordinator or Co-worker</p>	
<p>7. Notify HSEC and Project Management immediately.</p>	<p>On-Scene Coordinator or Co-worker</p>	

Wildfire

Threat Description	Forest or Brush Fire or equipment fire that could lead to forest or brush fire.
General Outline of Emergency Response	<p>Alert others to the danger.</p> <p>If fire is small and it is safe to do so attempt to extinguish the fire with fire extinguishers or suppression systems.</p> <p>Assess the situation and migration path of the fire and evacuate the area if necessary.</p> <p>Call 911 to report wildfire.</p>
Emergency Response Resources and their Location	<p>Fire Fighting Equipment – Fire extinguishers, shovel, water</p> <p>Personal Protective Equipment – Gloves and eye protection available on site.</p> <p>Communications – Cell and Sat phones</p>

Action Required	Role Responsible	Comment
This is a detailed list of emergency actions to be undertaken to bring the event under control.	This is who will perform each action step.	This is additional information to help the person performing the action.
1. Alert others of the fire.	Person who spots fire	
2. Only if safe to do so, remove ignition source and use closest fire extinguisher and/or firefighting tools to put out fire.	Person who spots fire	
3. If fire cannot be put out and/or is out of control, call 911 (or +1 801 840 4000 for SL County, +1 435 882 5600 for Tooele County) and notify the RTX Site Manager Manger immediately and evacuate the area.	Person who spots the fire	
4. If the fire is spotted by a field crew on the way to or from project site, note general GPS coordinates and call 911 or +1 801 840 4000 for SL County, +1 435 882 5600 for Tooele County) and return crew to town.	Field Crew	
5. Follow instructions from dispatch (if any given). Field work will be suspended if the fire poses a risk to field crews.	Incident Manager and All Personnel	
6. Notify RTX Management as soon as possible	Incident Manager	

Fire/Earthquake Emergency

Threat Description	Fire, gas leak, injury or need for police at the warehouse
General Outline of Emergency Response	Make sure all personnel are away from potential hazard, remove hazard if safe to do so, administer first aid, call 911 and provide them your call back number.
Emergency Response Resources and their Location	Ensure that you know the location of all emergency exits, fire extinguishers and where the master point is. Get familiar with the emergency response plan for the warehouse.

Action Required	Role Responsible	Comment
This is a detailed list of emergency actions to be undertaken to bring the event under control.	This is who will perform each action step.	This is additional information to help the person performing the action.
1. Make sure all personnel are informed about the potential hazard(s) and away from it.	On-site non-Injured personnel	Stop, look around and make sure you understand what caused the hazard. Don't become another victim to the hazard.
2. Remove hazard if it safe to do so.	On-site non-injured personnel	In case of small fire, put out small fire with fire extinguisher if trained. In case of small gas leak, stop the source of the leak, then air out building by opening windows and doors.
FIRE		
3. • Evacuate <u>immediately</u> if safe to do so, and meet others at muster station.	All Personnel at the warehouse	See Warehouse Location Map
4. If someone is injured, send someone else to call 911, and administer first aid as required.	On-site non-Injured personnel	Use the ABC's of Emergency First Aid
5. Call Emergency Number and give them your location	On-site non-Injured personnel	
6. Tell them the nature of the emergency and describe the type of assistance required.	On-site non-Injured personnel	Remain calm. Panic will not hasten the response time and may lead to misunderstanding or confusion.
7. Give them your call back number.	On-site non-Injured personnel	
EARTHQUAKE		
8. <u>During an earthquake</u> , stay calm – duck and cover In most cases, it is safest to remain inside of the building during an earthquake		
9. If you are <u>indoors</u> : stay inside and crouch under a desk or table, or near an interior wall. Stay away		

<p>from windows or objects that could fall on you</p> <p>If you are <u>outdoors</u>, stand away from buildings, trees, telephones, and electric lines</p> <p>If you are <u>driving</u>, drive away from underpasses/overpasses and power lines, stops in a safe, clear area and stay in your vehicle.</p>		
10. Do not use telephones unless there is a severe injury, since the phone systems will be overwhelmed by demand.		
11. After an earthquake, if you are indoors, check for fires or other hazards		
12. Evacuate quickly if safe to do so, and meet others at muster station. Open doors carefully, and be prepared for aftershocks.		
<p>13. During evacuation, be very observant for falling objects. Three potential dangers upon exiting the building after an earthquake are:</p> <ul style="list-style-type: none"> ✓ Falling trees ✓ Falling light posts ✓ Falling exterior building components. 		
14. Do not return to the building until it has been declared safe, and you have been instructed to do so by the On-Site RT Emergency Coordinator.		
<p>15. If you are trapped in debris</p> <ul style="list-style-type: none"> ✓ Do not light a match ✓ Do not move about or kick up dust, cover your mouth with clothing ✓ Rhythmically tap on a pipe or wall so that rescuers can hear and locate you. Shout only as a last resort. 		